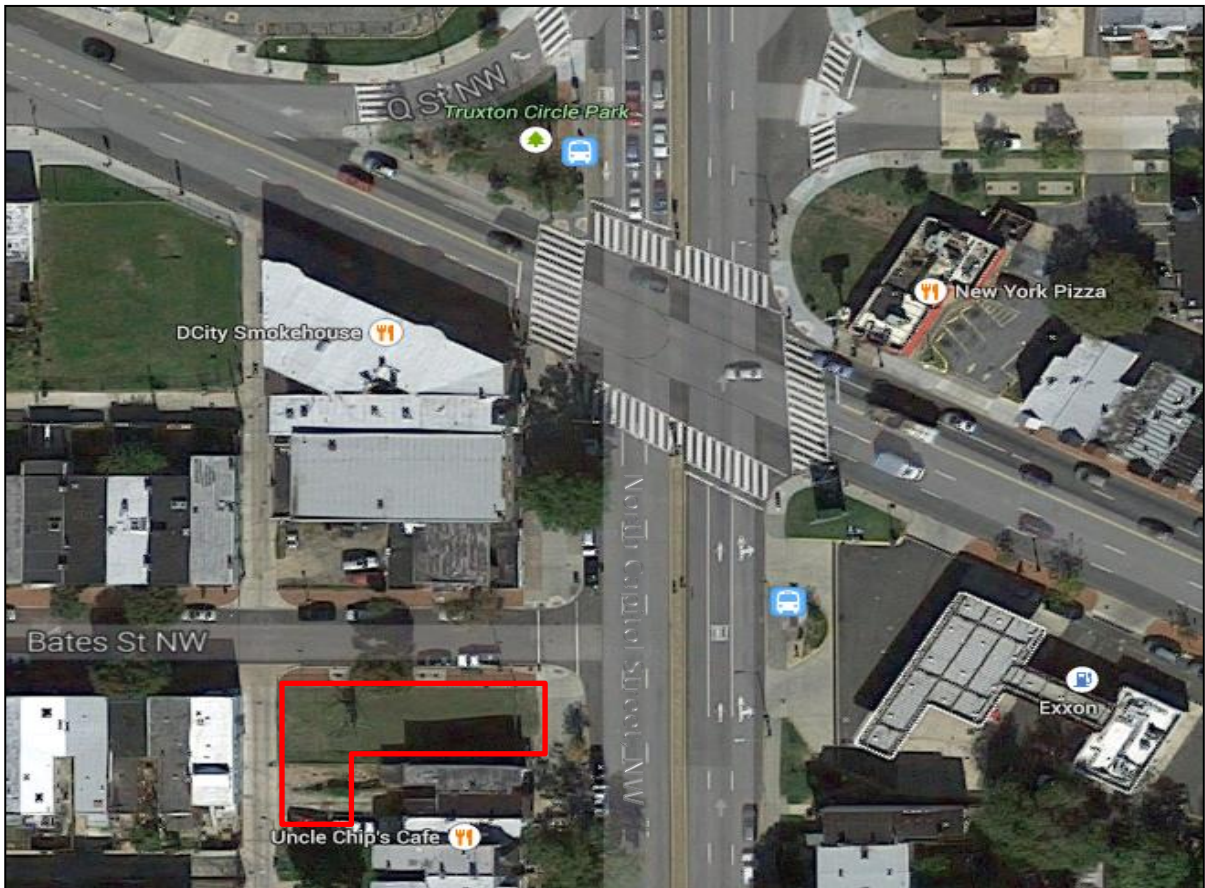


PROJECT PROFILE

This currently vacant lot presents the opportunity for redevelopment along North Capitol Street, NW, one of the District's main thoroughfares. Located just a block south of the intersection of North Capitol Street, NW, and Florida Avenue, NW, this parcel is ripe for matter-of-right, neighborhood appropriate development, including office, retail, mixed-use development, and housing.



DEVELOPMENT PROGRAM

- Total Acreage: 0.11 acres
- Lot SF: 4,982 sq. ft.
- Zoning: C-2-A

DEVELOPMENT FEATURES

- Located along North Capitol Street, NW, one of the District's Main Streets
- One block from the intersection of bustling North Capitol Street, NW, and Florida Avenue, NW
- Half-mile from the Noma-Gallaudet Metro Station (Red Line)
- One block from DCity Smokehouse
- Less than 10 blocks from Big Bear Cafe
- The Mid-City East Small Area Plan supports the redevelopment of this parcel into creative mixed-use, residential, or commercial development. For more information, visit: <http://planning.dc.gov/page/mid-city-east-small-area-plan-main-page>