



CRUMMELL SCHOOL

PUBLIC WORKSHOP

BETHESDA BAPTIST CHURCH
JULY 29, 2015



Dion **TOWNLEY**

Project Manager

Office of the Deputy Mayor for
Planning and Economic Development



Minister Mark **Tatum**

Bethesda Baptist Church



Peta-Gay **Lewis**

ANC 5D Commissioner



Kenyan R. **McDuffie**

Ward 5 Councilmember





OURRFP is a Mayoral initiative “to give the community the first opportunity to shape development... at Crummell School”



Tanya **Stern**

Deputy Director

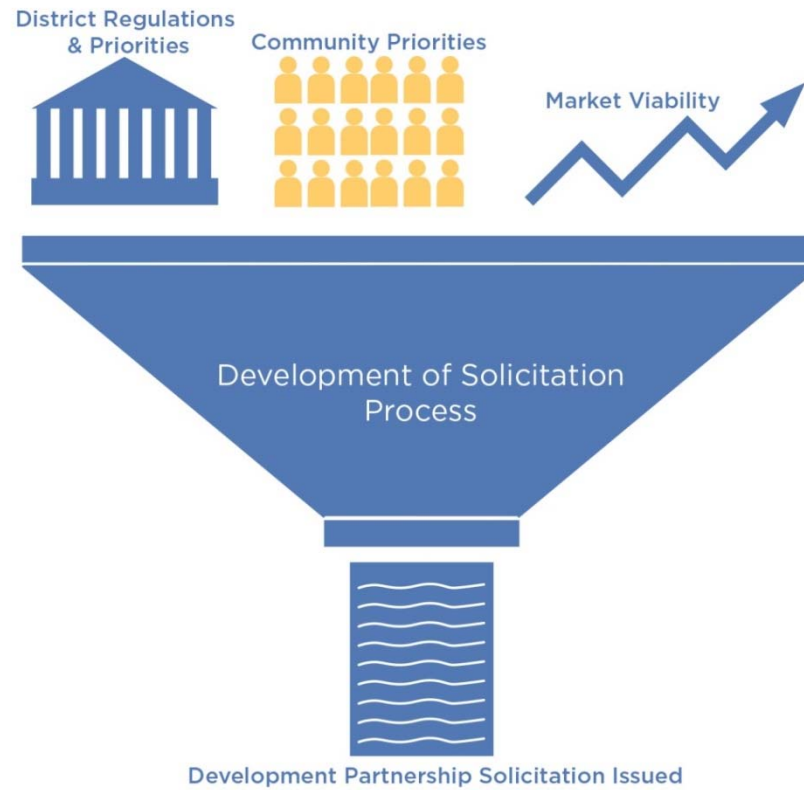
DC Office of Planning
Planning, Engagement and Design



Agenda

- OUR RFP/Crummell Site Overview
- Site History & Preservation Tools
- Site Analysis
- Small Group Discussion
- Report-back and Closing

OURRFP PROCESS



OUR RFP PRINCIPLES

Engagement:

- Conduct meaningful engagement and a productive dialogue with the community in order to understand the community's priorities
- Educate the public on the trade-offs and feasibility of different programs and benefits

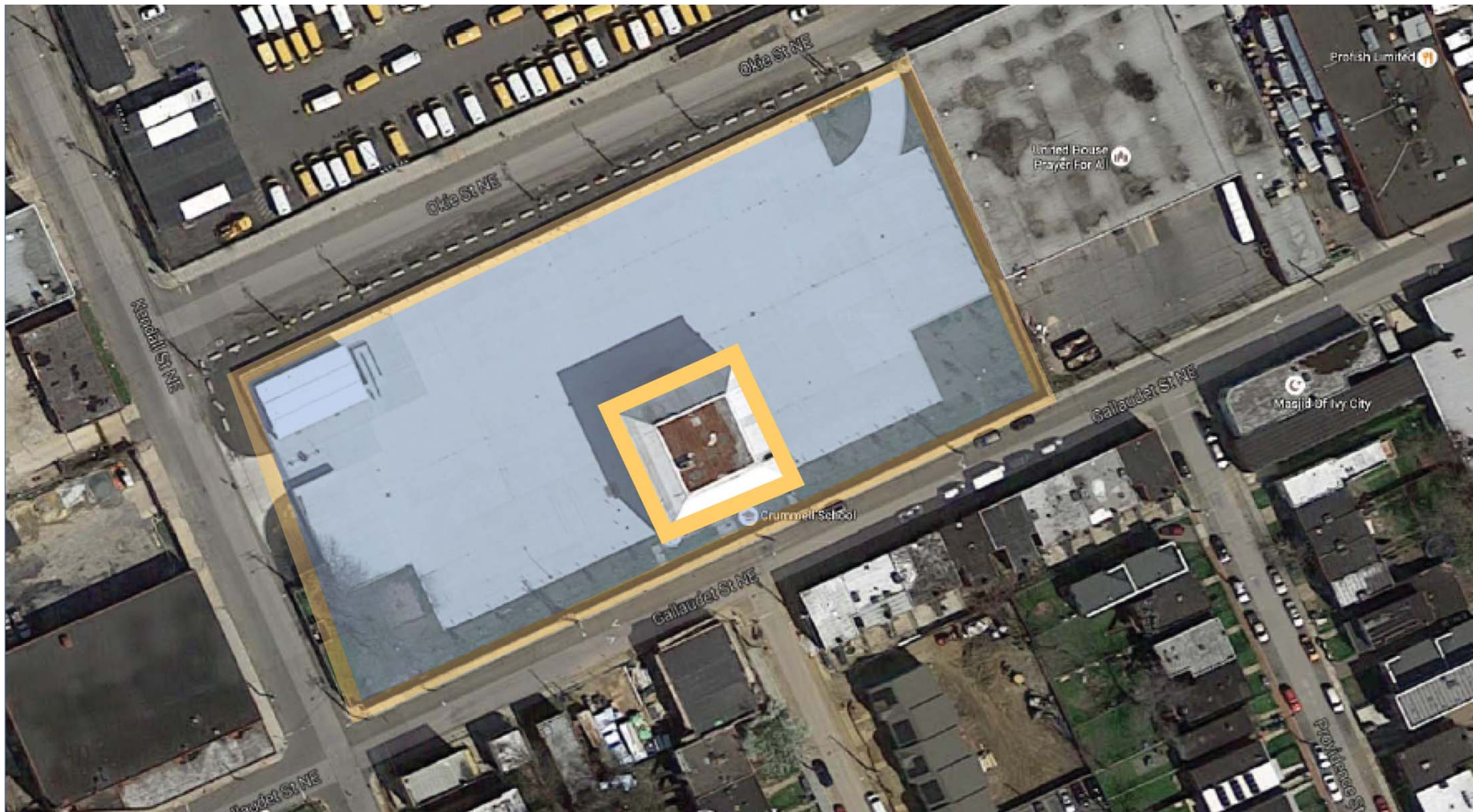
Transparency:

- Clearly communicate the goals and purpose of the engagement with transparency on the process that will follow the initial public engagements
- Provide clarity regarding how public input will be utilized to inform any development solicitation

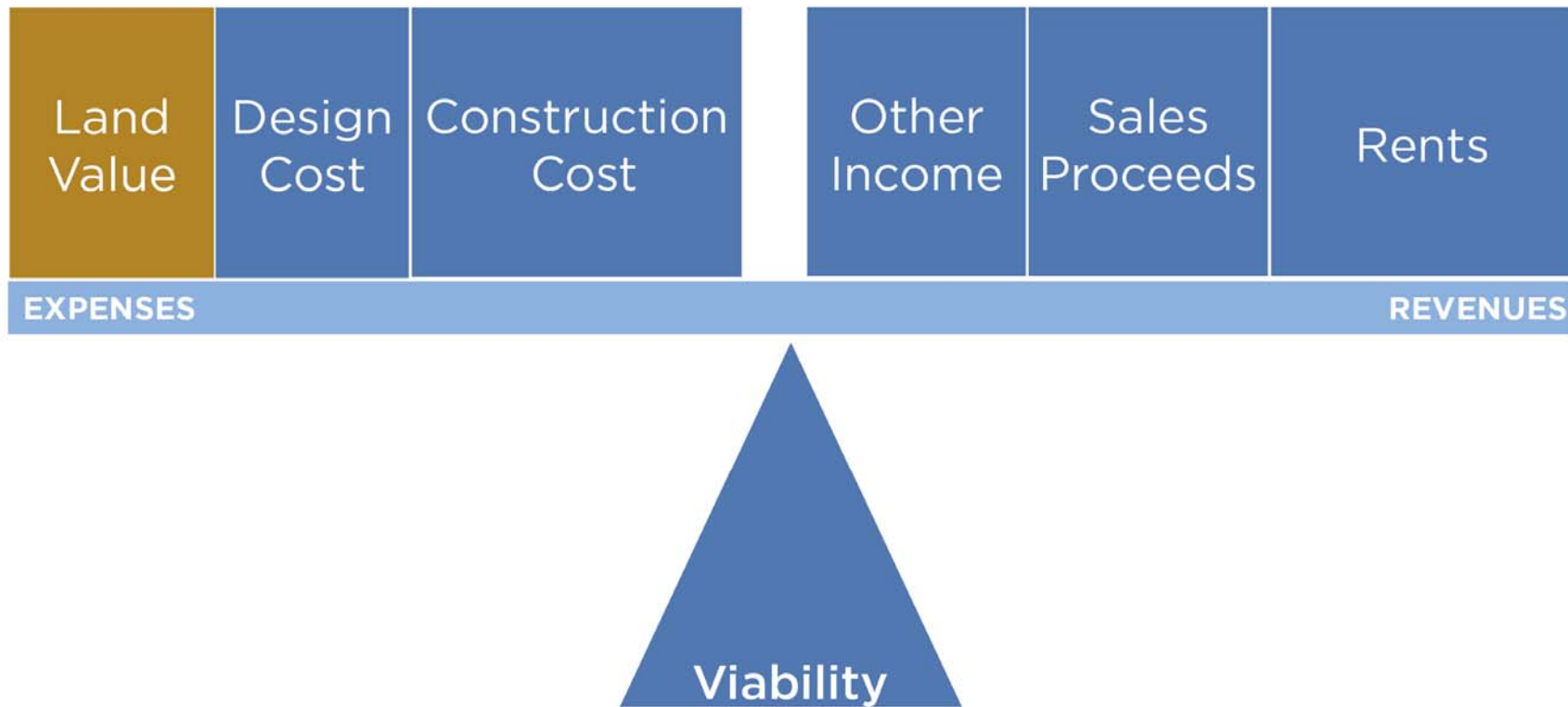
Accountability:

- Create an enhanced and ongoing relationship between DMPED, District agencies and the public throughout the RFP process
- Provide opportunities for public comment throughout the solicitation process.



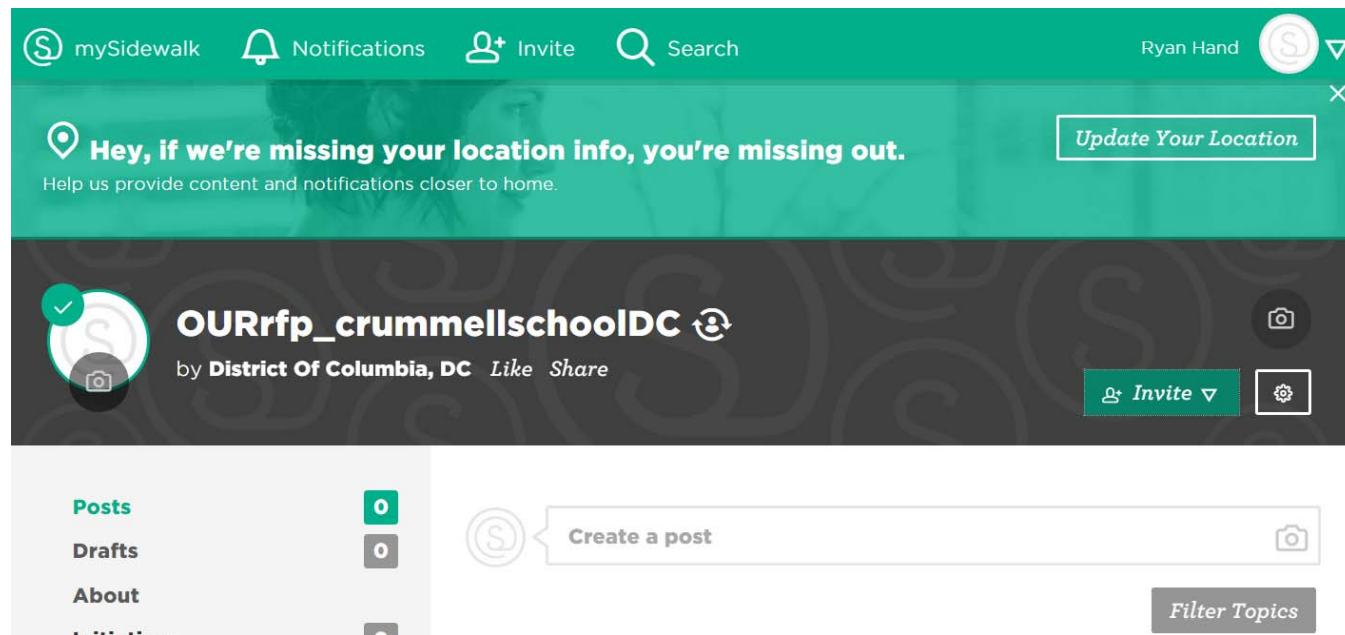


PROJECT EVALUATION



STAY ENGAGED

mysidewalk.com/r/289860



Agenda

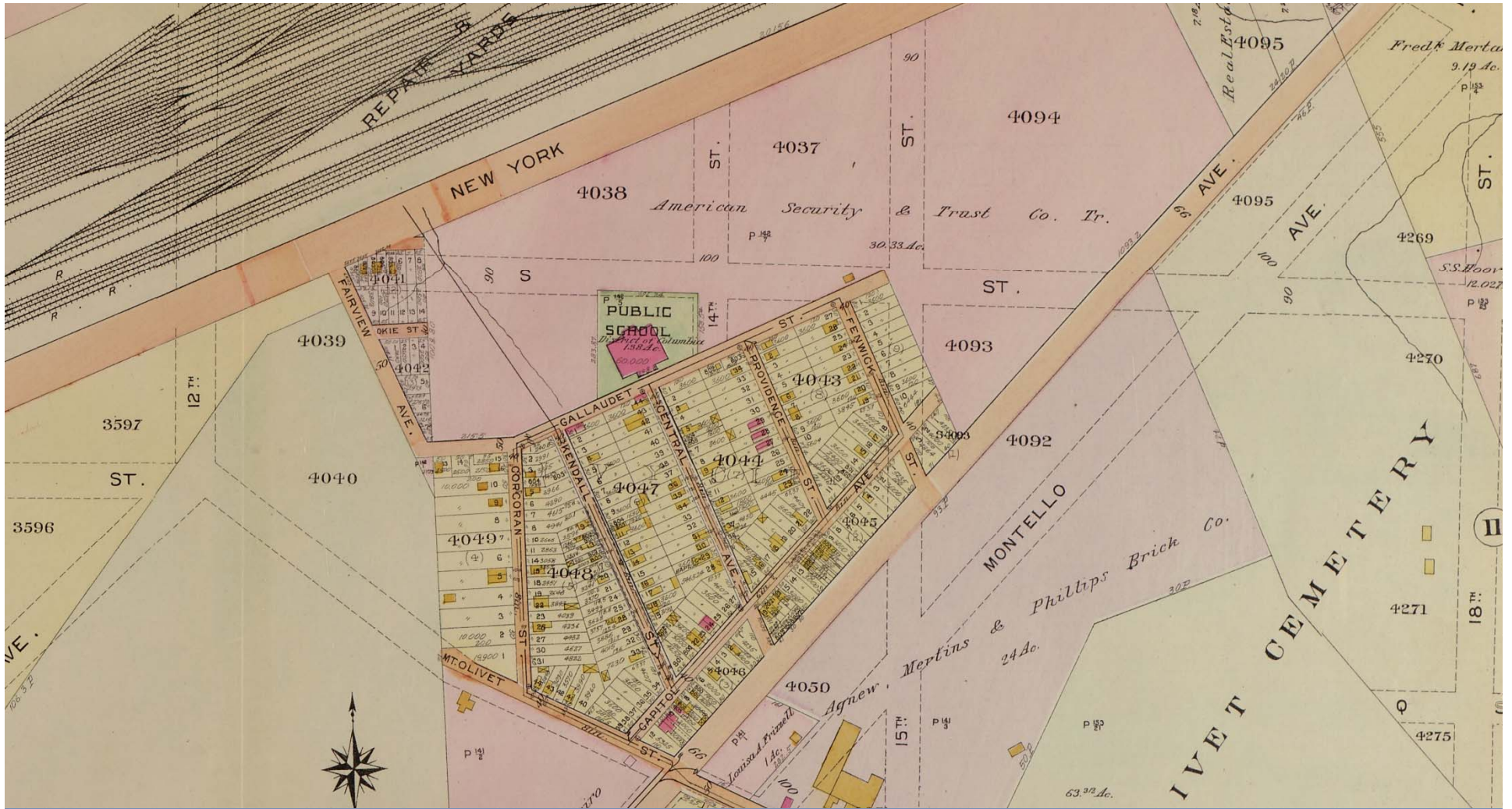
- OUR RFP/Crummell Site Overview
- Site History & Preservation Tools
- Site Analysis
- Small Group Discussion
- Report-back and Closing

Kim **Williams**

Architectural Historian DC Office of Planning









Alexander Crummell (1819-1898), the clergyman, abolitionist, teacher, and missionary for whom the school is named.

Historic Preservation Guidelines

- In 2002, the Crummell School was designated a DC Landmark listed in the National Register of Historic Places.
- Rehabilitation of the school and redevelopment of the site will be subject to review by the Historic Preservation Review Board (HPRB).
- Fully restore the building exterior
- Interior fabric should be retained, if possible.
- New construction should incorporate appropriate setbacks, massing and heights to respect the historical and architectural significance of the school.

Agenda

- OUR RFP/Crummell Site Overview
- Site History & Preservation Tools
- Site Analysis
- Small Group Discussion
- Report-back and Closing

Deborah **CRAIN-KEMP**

Neighborhood Planner
DC Office of Planning





Neighborhood Context





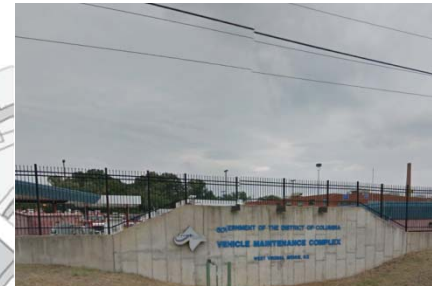
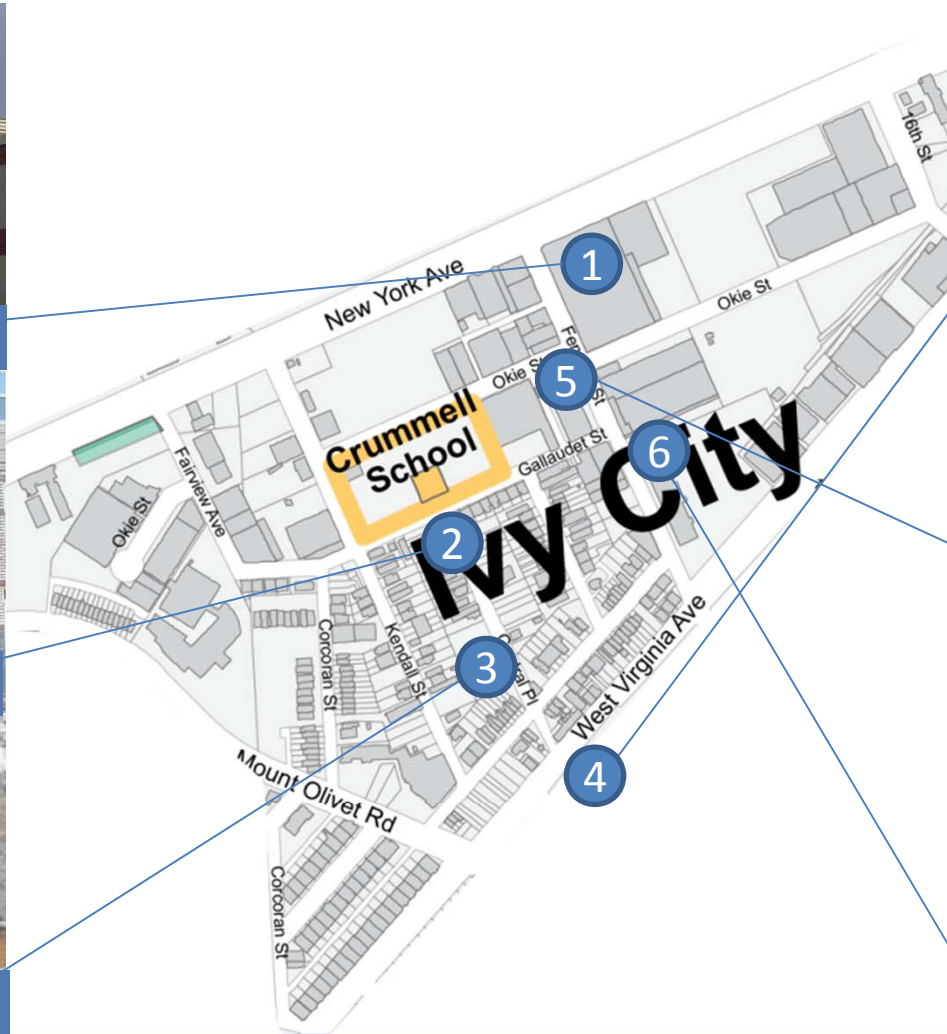
Hechts Warehouse



New Housing



Historic Housing



DPW/DDOT Facility



Pro Fish

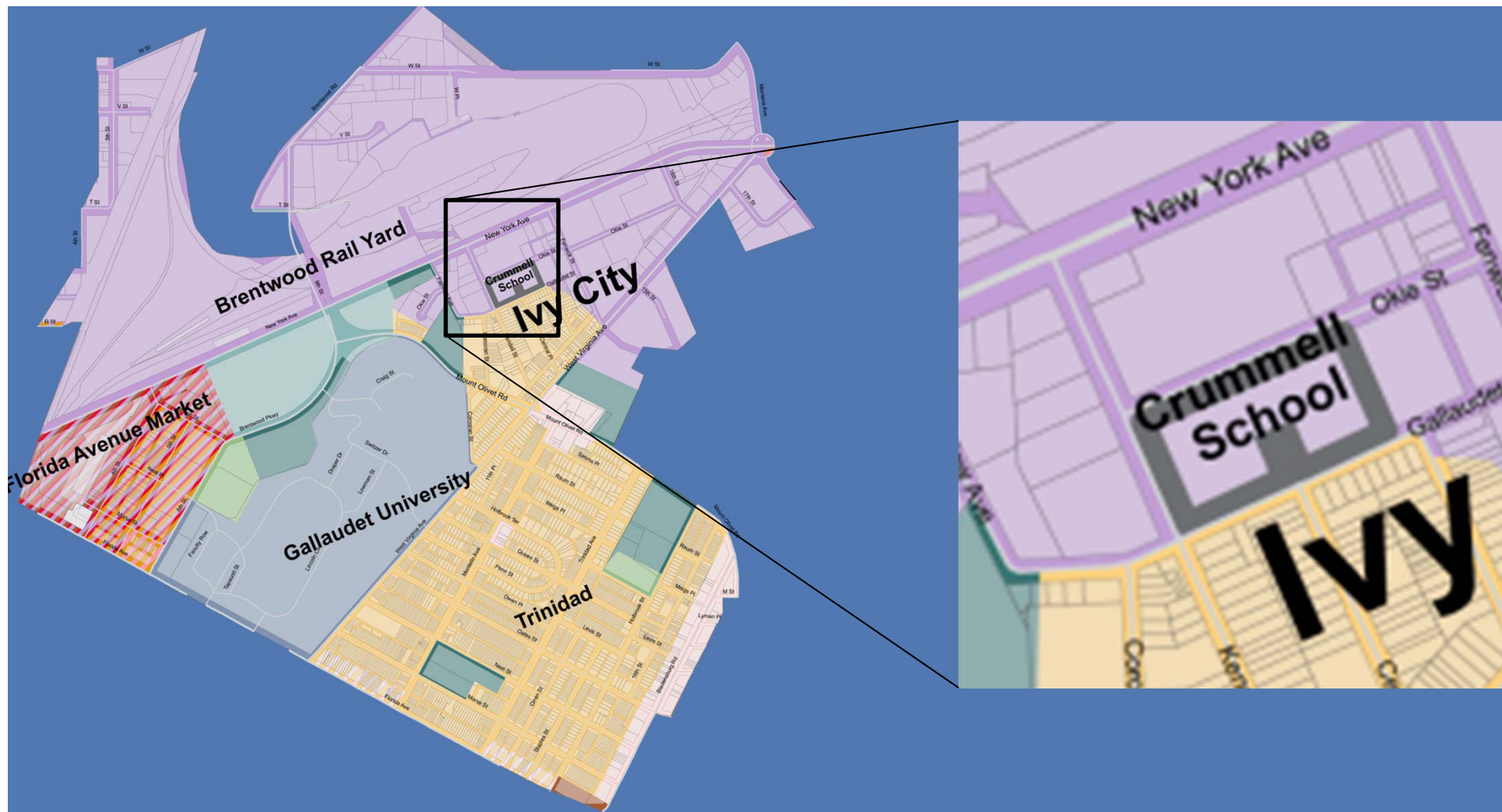


New Columbia



Community Assets







C-M-1 Zoning

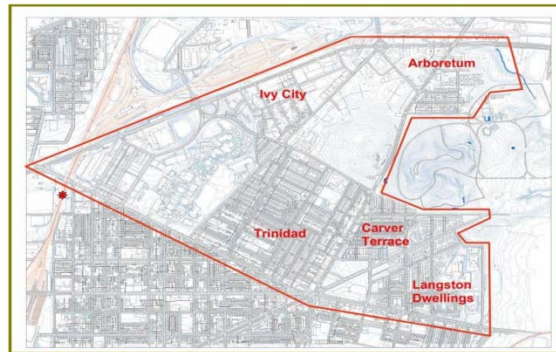
- Civic
- Light Manufacturing
- Distribution
- Retail
- Office
- Institutional



ULI Urban Land
Institute
Washington

NORTHEAST GATEWAY:

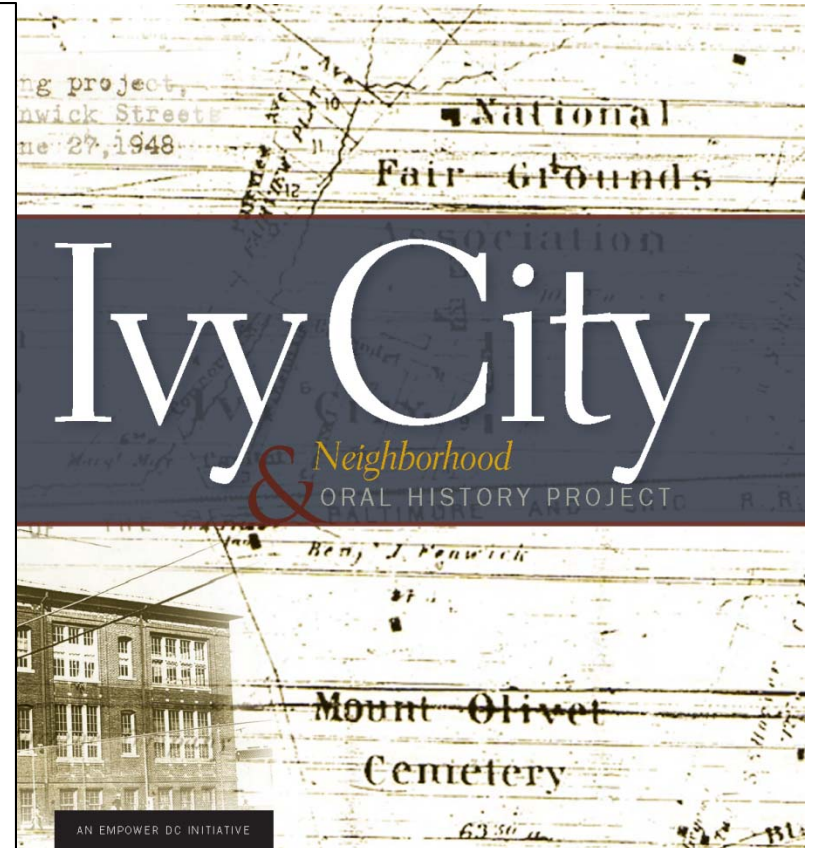
*Many Neighborhoods,
One Community
A Revitalization Strategy*



Final Report - September 2007



Prepared for the **DISTRICT OF COLUMBIA Office of Planning**
by Randall Gross / Development Economics
Allison Platt & Associates
O.R. George Associates
Women Like Us

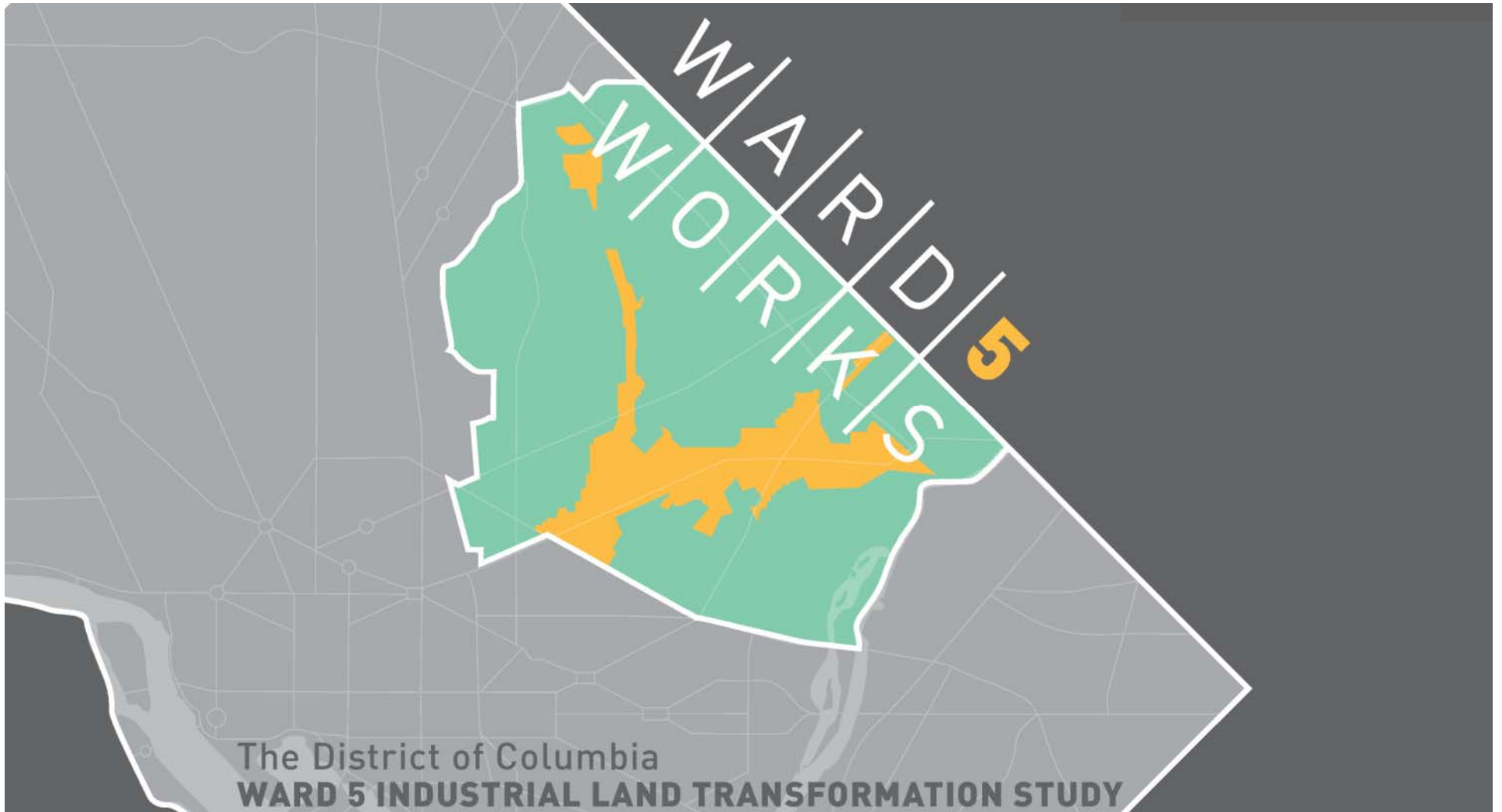


★ ★ ★
OUR
RFP

District of Columbia
Office of Planning



WE ARE
WASHINGTON
DC



Ward 5 Works



Agenda

- OUR RFP/Crummell Site Overview
- Site History & Preservation Tools
- Site Analysis
- Small Group Discussion
- Report-back and Closing



Tanya **Stern**

Deputy Director

DC Office of Planning
Planning, Engagement and Design



SMALL GROUP DISCUSSION RULES

1. Led by Table Facilitators
2. Listen and Be Respectful of Others
3. Allow Everyone to Speak
4. Silence Your Phone

SMALL GROUP DISCUSSION TOPICS

- Envisioning Crummell School
- Commercial Priorities
- Public Space Priorities
- Historic Value

Envisioning Crummell School (19 Minutes)

1. What is your big idea for the future of the Crummell School site?
2. Which re-use for the Crummell School building do you think would best serve the community? (Possible options for community benefit uses include, but are not limited to: workforce development center, adult education, recreation center, community center, senior services, etc.)
3. What types of uses would you want to see activating the surrounding parking lot around the building?

Commercial Priorities (12 Minutes)

1. Which retail options would you most like to see in your neighborhood? (Examples – Neighborhood-serving uses: Grocer, Coffee Shop, Restaurant/Bar; Regional-serving: destination shopping)
2. Are there light industrial/production uses that you would like to see thriving on the site? (Potential options include: spaces for small businesses, incubators, “maker” and start-up businesses [small-scale production uses]; larger-scale commercial enterprise)
3. Is there anything missing from the neighborhood that might be incorporated at Crummell?

Public Space Priorities (12 Minutes)

1. What public space uses would you most enjoy at the Crummell site? (Potential uses heard in previous discussions: Splash Park, Green Space, Outdoor Recreation/Sports, community garden, etc.)
2. Are there any sustainability considerations you would want to see included in a new project at the site? (environmental, equity, health, etc.)

Historic Value (5 Minutes)

1. How do you want to honor the history of the school in a future project?

Agenda

- OUR RFP/Crummell Site Overview
- Site History & Preservation Tools
- Site Analysis
- Small Group Discussion
- Report-back and Closing

PRIORITIES **REPORTS**

Share just **one** priority or key idea from your table

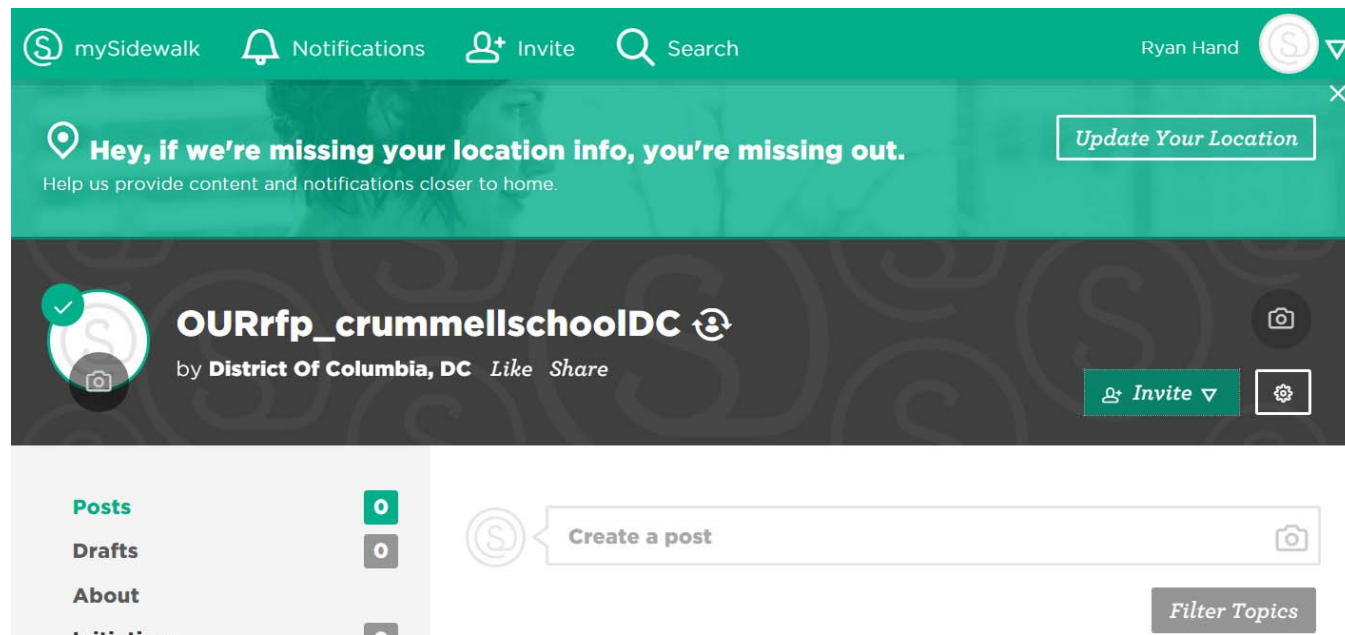


NEXT STEPS

- Launch **Online Engagement Forum**
- **Compile** all information received from the public
- Host **Follow Up Meeting** to go over outcomes and preferences

STAY ENGAGED

mysidewalk.com/r/289860



Brian T. **Kenner**

Deputy Mayor for
Planning and Economic Development



★ ★ ★ OUR RFP

