

IVY CITY – REVIVING THE HEART, PRESERVING THE HISTORY, ENGAGING THE FUTURE



Crummell School Presentation



STONEBRIDGE CARRAS



TEAM OVERVIEW

- World Class Development – Great Place-making
- Tremendous Public Partnership Experience
- Decades of local involvement in Ivy City
- Financial Strength for Success



Crummell School - Ivy City



OUR CONCEPT



Crummell School - Ivy City

- Crummell School:
 - Center Piece of Development
 - Landmark/Community Treasure;
 - State of the Art Facility for Recreational and Desired Community Uses
- Open Space with Innovative Use
- Preserving/Expanding Industrial
- Job Training/Creation and Workforce Development
- Community Serving Retail
- Mixed Income Housing
- Housing that blends to existing neighborhood

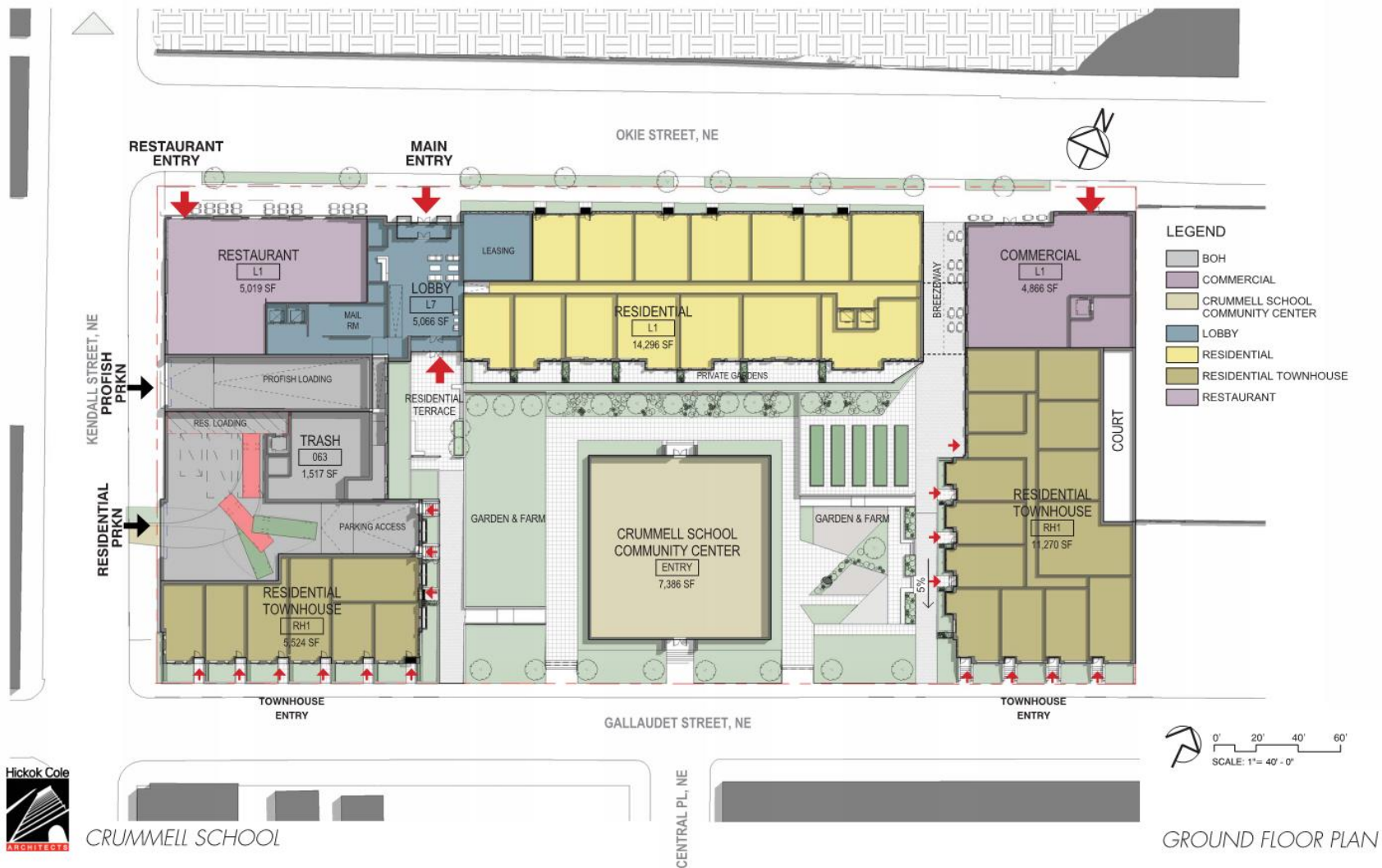


Crummell School - Ivy City

KEY FEATURES FOR NEIGHBORHOOD COMPATIBILITY

- Neighborhood Transition
 - Townhomes on Gallaudet
 - Density on Okie
- Preserving Industrial Uses while Diminishing Industrial Impact
- Community Open Space – Passive, Active, Innovative
- Parking and Loading Docks Below Grade

GROUND FLOOR PLAN



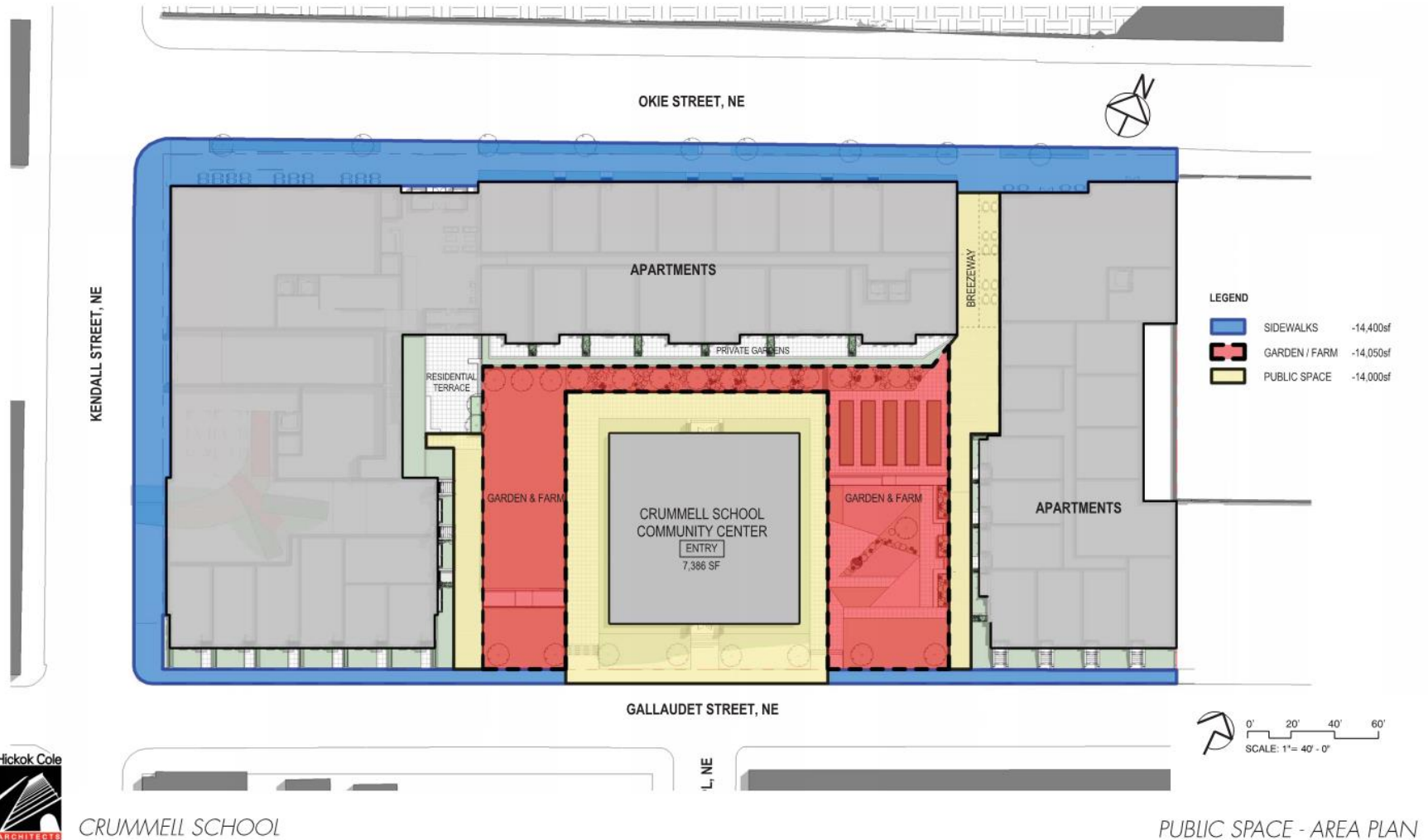
CRUMMELL SCHOOL



STONEBRIDGE CARRAS



PUBLIC SPACE – AREA PLAN



P1 BASEMENT PLAN



CRUMMELL SCHOOL

NE

0' 20' 40' 60'
SCALE: 1"= 40' - 0"

P1 BASEMENT PLAN



STONEBRIDGE CARRAS



GALLAUDET VIEW TO WEST



CRUMMELL SCHOOL

GALLAUDET LOOKING WEST



STONEBRIDGE CARRAS



SOUTH ELEVATION



CRUMMELL SCHOOL

SOUTH ELEVATION



STONEBRIDGE CARRAS



OKIE VIEW TO KENDALL/RESTAURANT END



CRUMMELL SCHOOL

OKIE VIEW – KENDALL/RESTAURANT END



STONEBRIDGE CARRAS



OKIE VIEW TO BREEZEWAY



CRUMMELL SCHOOL

OKIE VIEW – BREEZEWAY END



STONEBRIDGE CARRAS



SCHOOL/GARDEN VIEW FROM BREEZEWAY



CRUMMELL SCHOOL

VIEW OF SCHOOL/GARDEN FROM BREEZEWAY

JOB TRAINING/CREATION AND WORKFORCE DEVELOPMENT



Crummell School - Ivy City

- ProFish Expands
- Farm Ivy City
- Renovated Crummell School Ideal Facility
- 21st Century Job Skills Creation



SUMMARY OF STONEBRIDGE/JARVIS/PROFISH PLAN



Crummell School - Ivy City

- Restore Crummell School
 - Shining Beacon of Community Pride and Service
 - Community/District Determine Operations/Program
 - Day Care, Health Clinic, Recreational Facility, Job Training, Culinary School
- Financial Commitment to Turn Key Crummell School & Open Space - \$14M Budget
 - Includes \$1 million to tailor the interior spaces to the program approved by the District and the Community
 - Title to the renovated school is retained by the District
- Provide, Maintain, and Enhance Industrial Business History
- Mixed Income Housing
- Create New Permanent Jobs and Retain Existing Jobs in Ivy City
- Enhance Tax Base

IVY CITY – REVIVING THE HEART, PRESERVING THE HISTORY, ENGAGING THE FUTURE



STONEBRIDGE CARRAS

