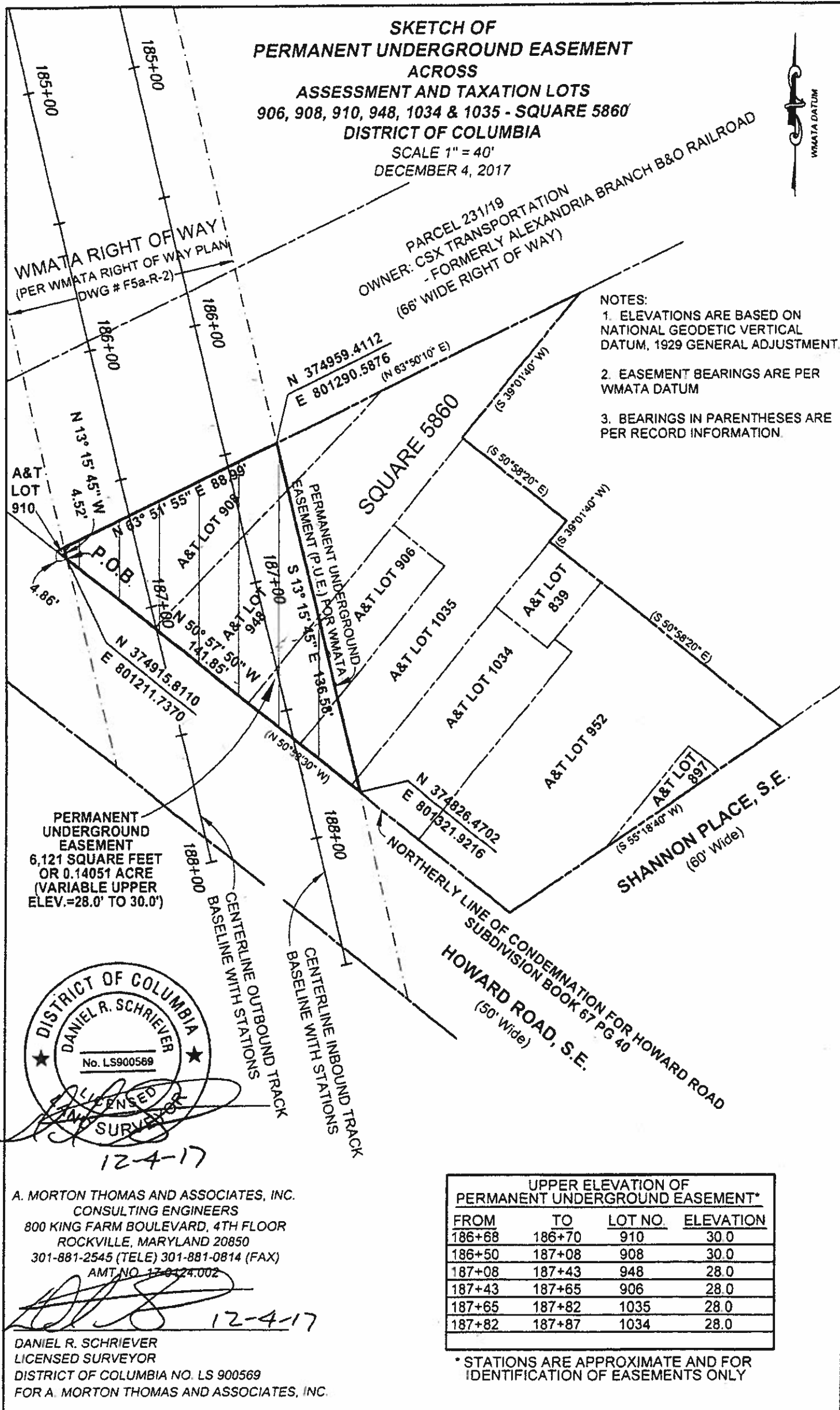


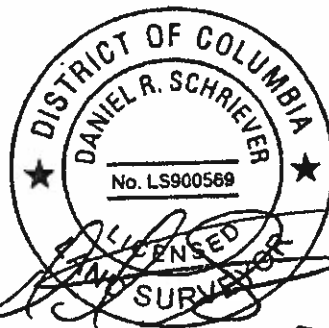
**SKETCH OF  
PERMANENT UNDERGROUND EASEMENT  
ACROSS  
ASSESSMENT AND TAXATION LOTS  
906, 908, 910, 948, 1034 & 1035 - SQUARE 5860  
DISTRICT OF COLUMBIA**

SCALE 1" = 40'  
DECEMBER 4, 2017



- NOTES:
1. ELEVATIONS ARE BASED ON NATIONAL GEODETIC VERTICAL DATUM, 1929 GENERAL ADJUSTMENT.
  2. EASEMENT BEARINGS ARE PER WMATA DATUM
  3. BEARINGS IN PARENTHESES ARE PER RECORD INFORMATION.

PERMANENT UNDERGROUND EASEMENT  
6,121 SQUARE FEET  
OR 0.14051 ACRE  
(VARIABLE UPPER  
ELEV.=28.0' TO 30.0')



A. MORTON THOMAS AND ASSOCIATES, INC.  
CONSULTING ENGINEERS  
800 KING FARM BOULEVARD, 4TH FLOOR  
ROCKVILLE, MARYLAND 20850  
301-881-2545 (TELE) 301-881-0814 (FAX)  
AMT. NO. 17-0124.002

*[Signature]*  
DANIEL R. SCHRIEVER  
LICENSED SURVEYOR  
DISTRICT OF COLUMBIA NO. LS 900569  
FOR A. MORTON THOMAS AND ASSOCIATES, INC.

UPPER ELEVATION OF PERMANENT UNDERGROUND EASEMENT*			
FROM	TO	LOT NO.	ELEVATION
186+68	186+70	910	30.0
186+50	187+08	908	30.0
187+08	187+43	948	28.0
187+43	187+65	906	28.0
187+65	187+82	1035	28.0
187+82	187+87	1034	28.0

\* STATIONS ARE APPROXIMATE AND FOR IDENTIFICATION OF EASEMENTS ONLY