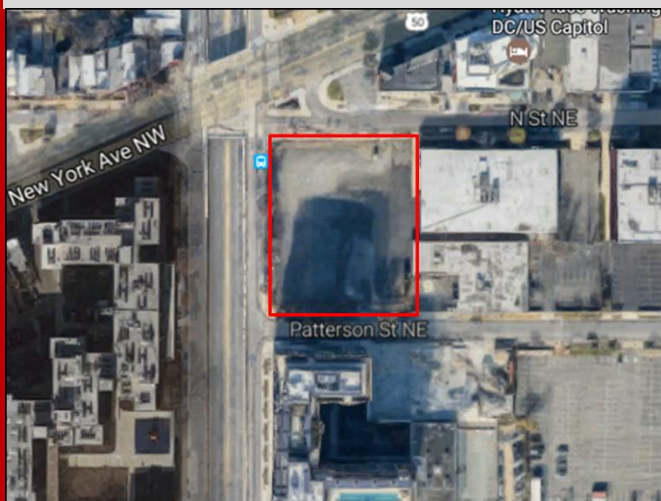


2 Patterson Street, NE



- Agency: DMPED
- 2 Patterson Street, NE
- Ward 6
- Site size: 42,000 SF
- Zoning: D-5
- NoMA, Mid City East, Northwest One
- RFP Release: Summer 2017

2 Patterson Street, NE is a 42,000 sf lot fronting North Capitol Street, just south of New York Avenue, and on the western edge of the burgeoning NoMa district. The property is zoned D-5 and can be redeveloped by-right as high-density commercial and/or residential. Currently an unimproved surface parking lot, the property is prime for redevelopment and will be solicited as part of the New Communities Initiative for the Northwest One community.

The New Communities Initiative (NCI) was launched in 2005 to revitalize severely distressed subsidized and public housing plagued with high crime and economic segregation. It includes the development of “offsite” properties as mixed-income communities. To date, 250 units have been demolished and a total of 2,489 units have come online or are in the development pipeline.

Questions? Contact Lee Goldstein at Lee.Goldstein@dc.gov or 202-729-2159.