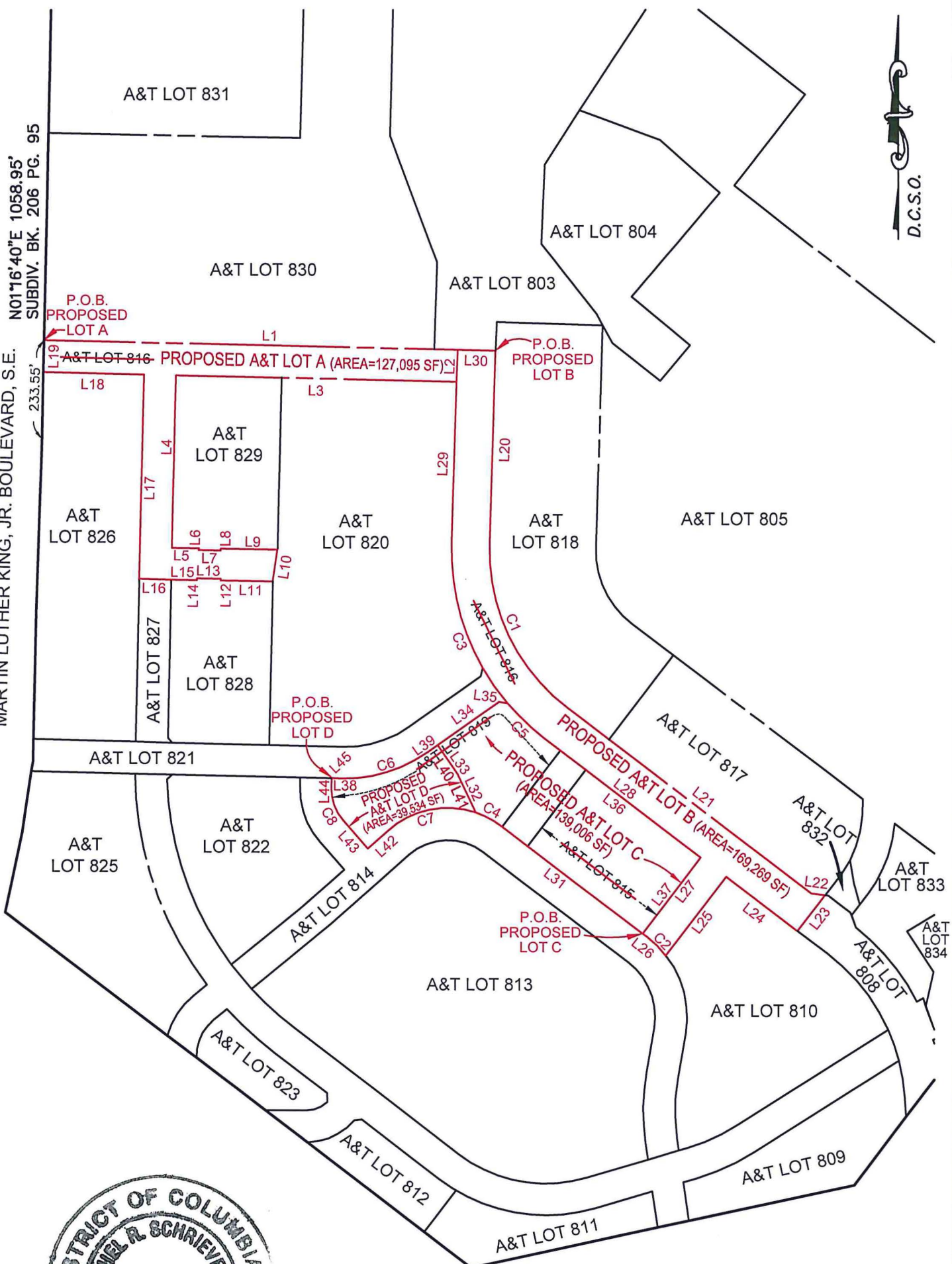




N01°16'40"E 1058.95'  
SUBDIV. BK. 206 PG. 95

MARTIN LUTHER KING, JR. BOULEVARD, S.E.  
233.55'



6-31-17

SEE SHEET 2 OF 2 FOR LINE  
AND CURVE TABLES

SKETCH OF  
PROPOSED A&T LOTS A, B, C and D  
TO REPLACE A&T LOTS 816, 815 & 819  
FOR  
**ST. ELIZABETH EAST CAMPUS**  
SUBDIVISION LOT 2 - SQUARE S-5868  
SUBDIVISION BOOK 206 PAGE 95

SCALE: 1"=300' JANUARY 31, 2017  
AMT NO. 111-396.005

**AMT, LLC**  
PROFESSIONAL ENGINEERS & LAND SURVEYORS  
10 G STREET, N.E. SUITE 430  
WASHINGTON, D.C. 20002  
PHONE: (202) 289-4545 FAX: (202) 289-5051