

# The Hub of Chevy Chase

Chevy Chase Civic Site

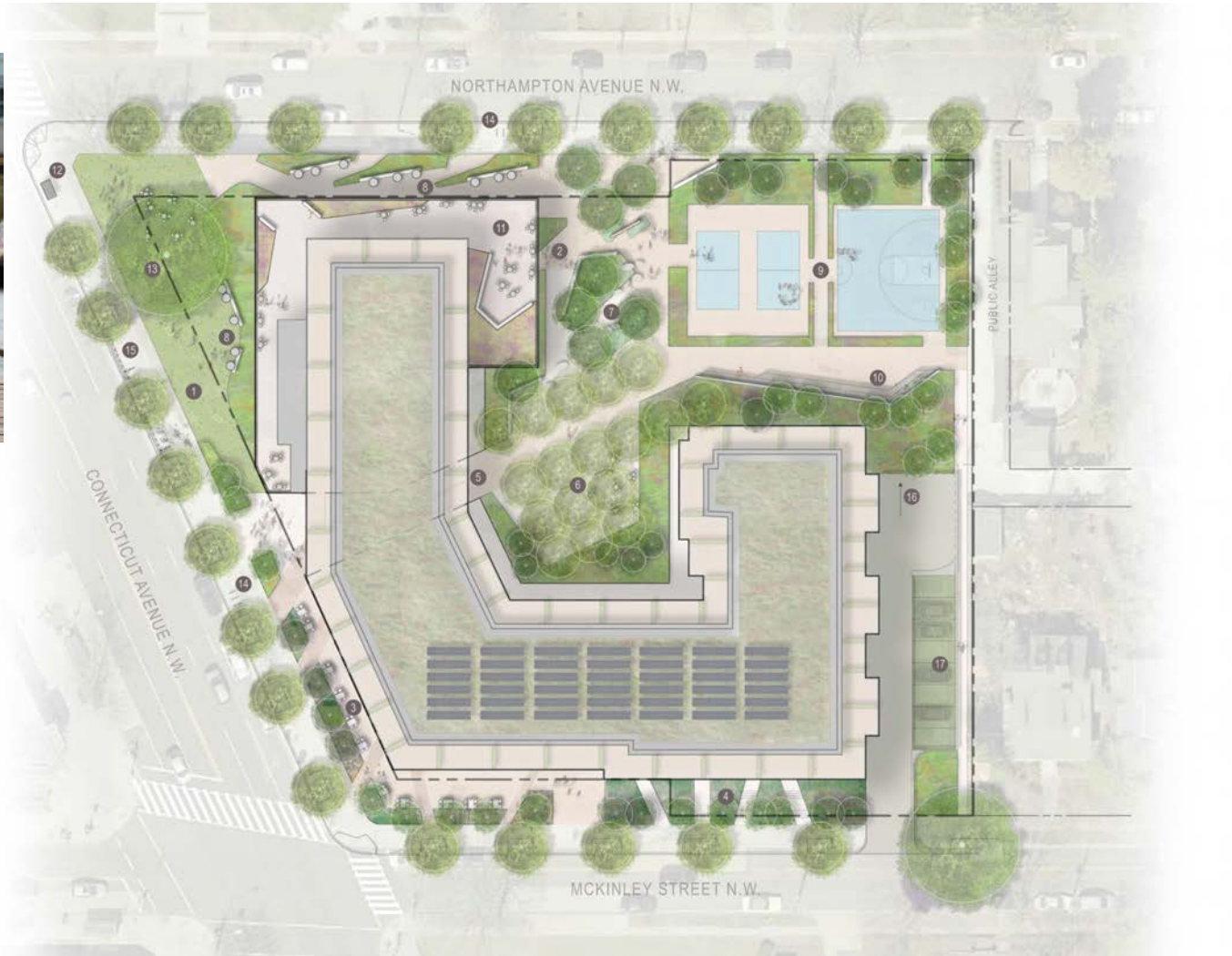




# Dynamic Community Space

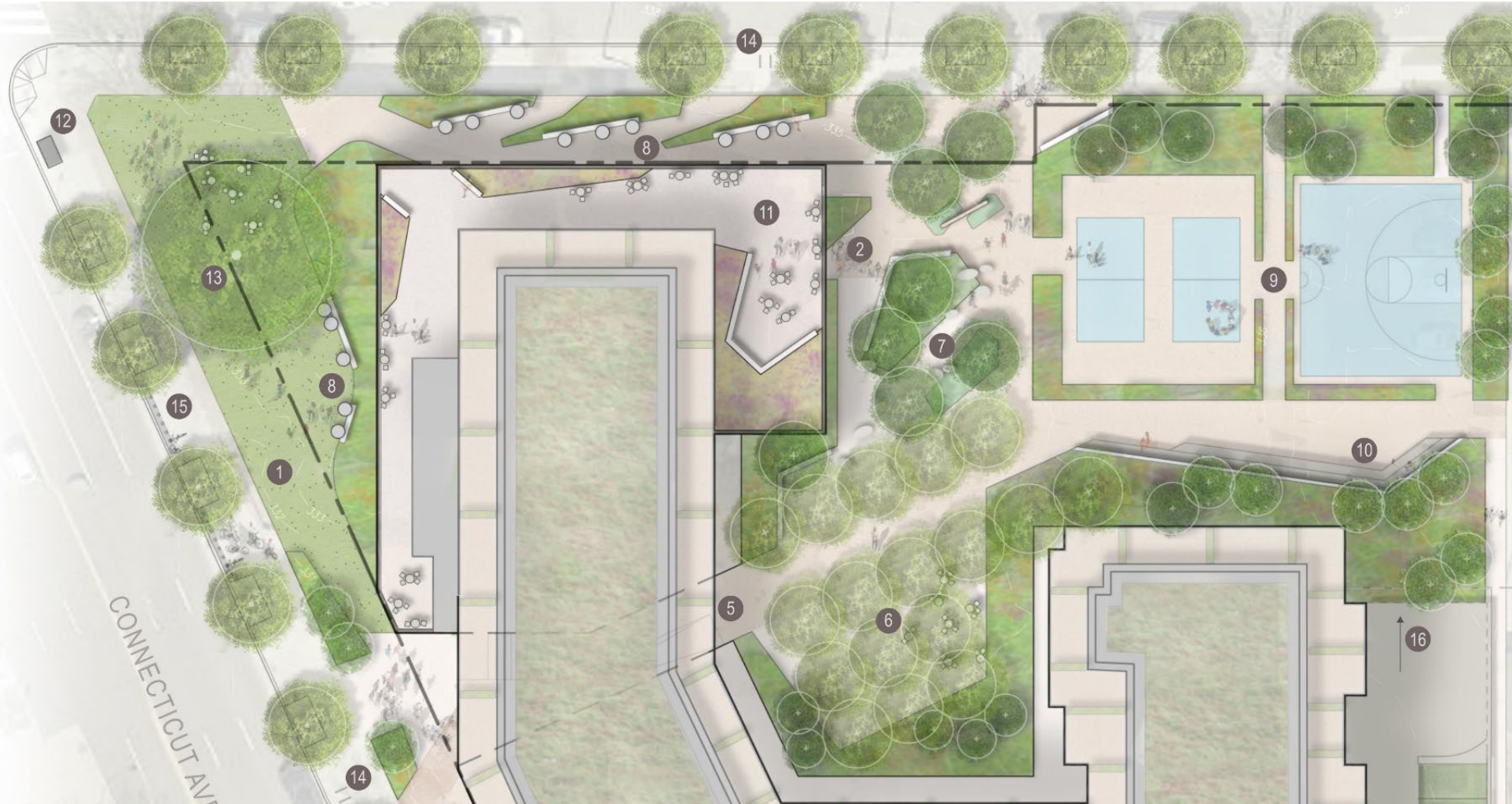


# Double the Open Space



1. Oak Lawn & Native Plant Garden
2. Library Entrance
3. Retail / Cafe
4. Residential Gardens
5. Park Entry Passageway
6. Bosque Terrace
7. Play Park and Plaza
8. Reading Nooks
9. Flexible Sports / Event Courts
10. Amphitheater
11. Terrace & Outdoor Classroom
12. Bus Stop
13. Heritage Tree
14. Bike Racks
15. Capital Bikeshare
16. Underground Parking Entry
17. Permeable Paved Parking

# Double the Open Space



1. Oak Lawn & Native Plant Garden
2. Library Entrance
3. Retail / Cafe
4. Residential Gardens
5. Park Entry Passageway
6. Bosque Terrace
7. Play Park and Plaza
8. Reading Nooks
9. Flexible Sports / Event Courts
10. Amphitheater
11. Terrace & Outdoor Classroom
12. Bus Stop
13. Heritage Tree
14. Bike Racks
15. Capital Bikeshare
16. Underground Parking Entry
17. Permeable Paved Parking

# Team Experience

## Franklin Park



**STUDIOS Architecture**

## MLK Library



**OEHME, van Sweden**

## Stead Park



**GCS Sigal**

# Neighborhood-Serving Retail



# Balanced Approach



# Unique Housing Approach

	AFFORDABLE	WORKFORCE	MARKET RATE	
	30% & 50% MFI	80% MFI		TOTAL
TOTAL	70	67	69	206
	33%	33%	33%	100%



# Team Experience

**450 K**

**Press House Hotel**

**Gallery Place Hotel**



**Rift Valley**



**Rift Valley**



**Rift Valley**

# Neighborhood Scale

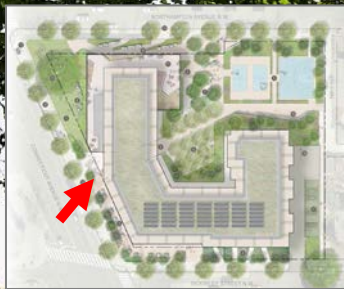




# Community-Centered Approach



The Hub



CHEVY CHASE LIBRARY & COMMUNITY CENTER



GCS | SIGNAL



STUDIOS



# Community Benefits

1

**Double the  
Open  
Space**

2

**New Library &  
Community  
Center**

3

**Neighborhood  
Serving  
Retail**

4

**Broad  
Range of  
Housing**



CHEVY CHASE LIBRARY & COMMUNITY CENTER

