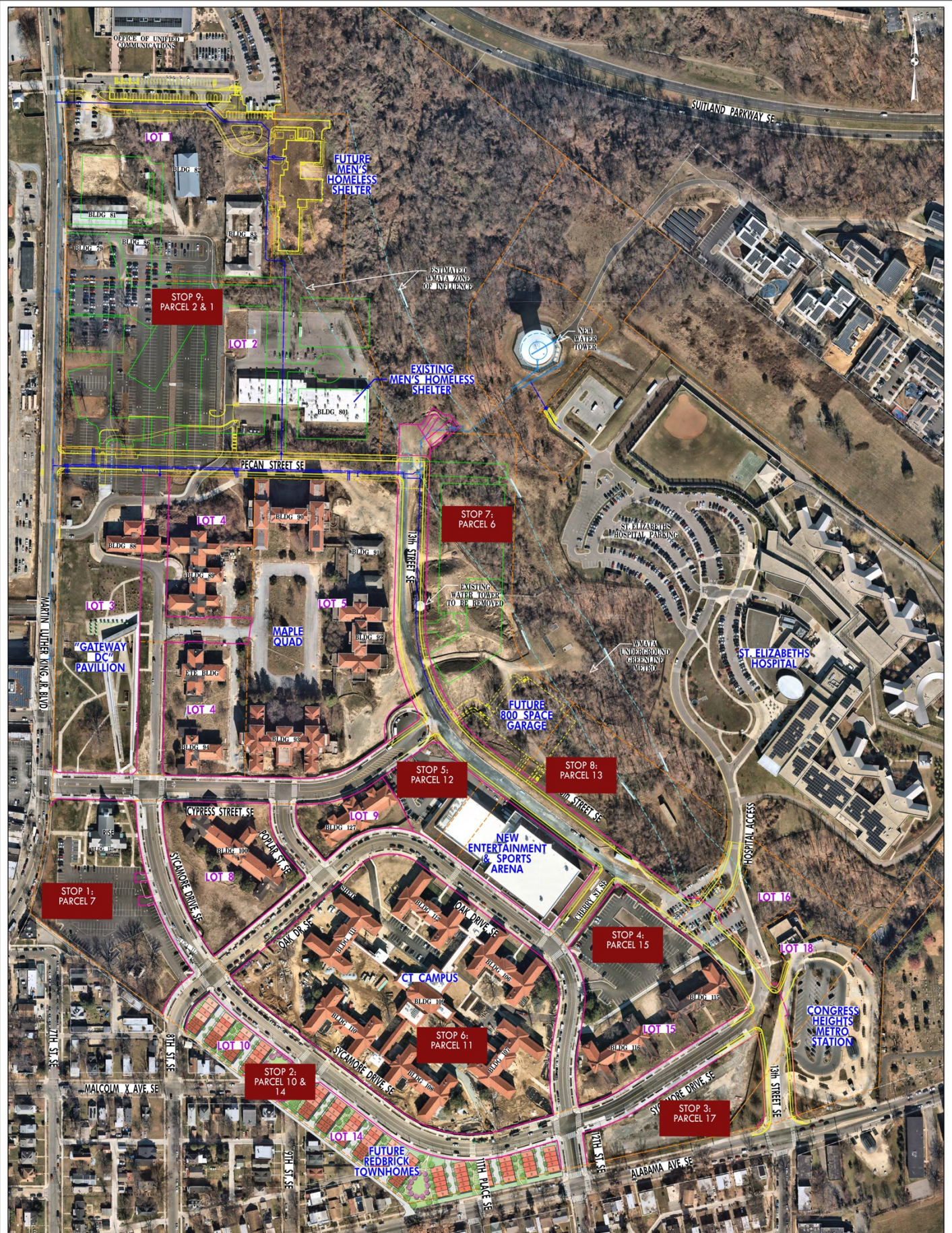
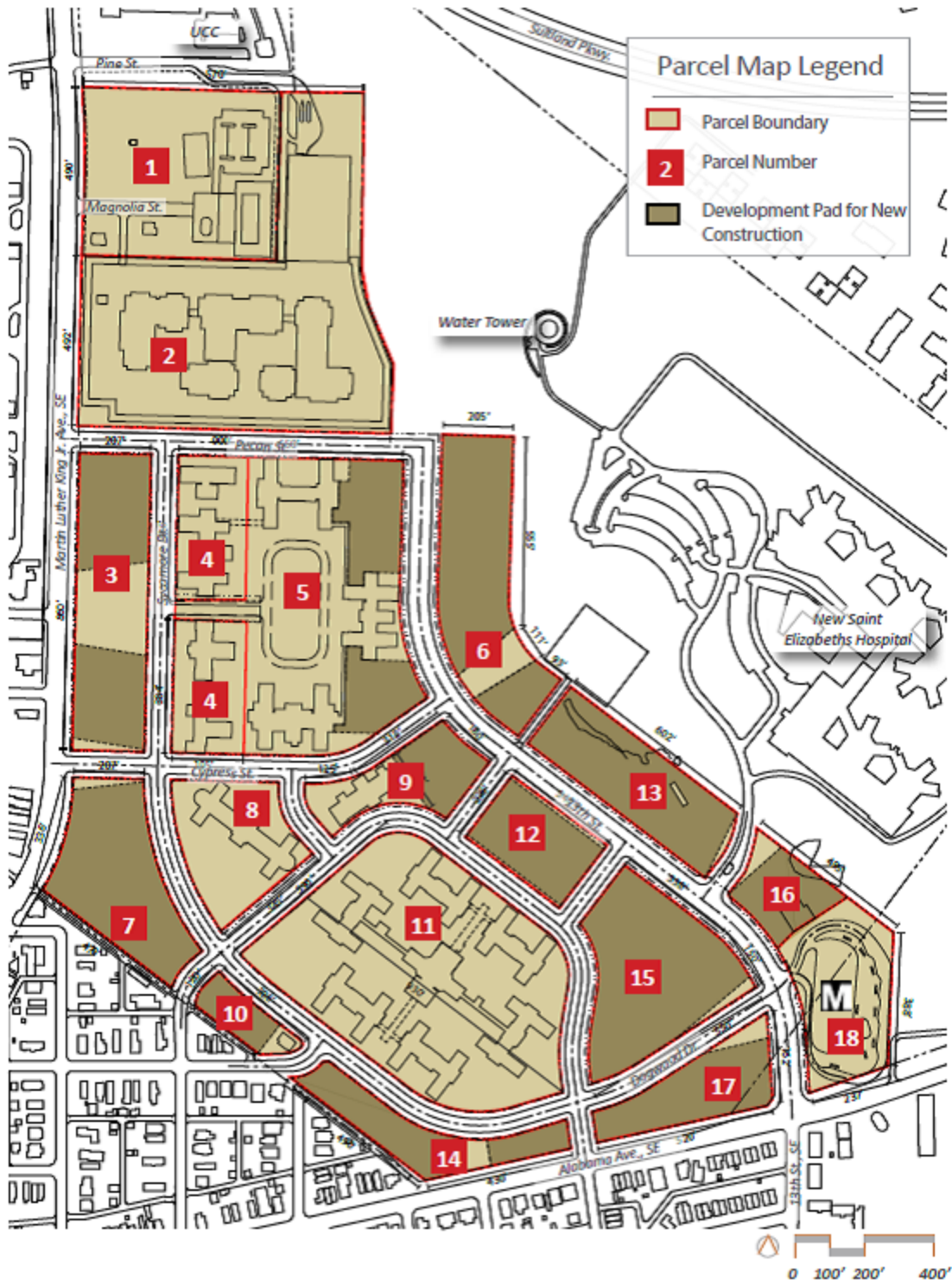


## St. Elizabeths East Redevelopment Walking Tour Guide

<b>Parcel</b>	<b>Activity</b>	<b>Development Lead</b>
*Parcel 1	Farm Parcel/Horse Barn	DGS
Parcel 2	New GW/UHS Hospital 801 East Men's Replacement Shelter	GW/UHS DGS
Parcel 3	Gateway DC	Owned by DMPED/ Managed by Events DC
Parcel 4	Maple Quad	
*Parcel 6	750 Space Parking Garage	DGS
Parcel 7	R.I.S.E Demonstration Center Current RFP	Owned by DMPED/ Managed by Events DC
Parcels 8 & 9	Current RFP	
*Parcels 10 & 14	District Towns @ St. Elizabeths East	Redbrick/, LMD/Gragg Cardona Partners/Knutson
Parcel 11	The Residences	Flaherty & Collins, AEDC
Parcel 12	Entertainment and Sports Arena	Events DC
Parcel 13	Residential & Ground Floor Retail	Neighborhood Development Company
Parcel 15	Interim Retail Future - Residential, Office, Hotel and Town Center	Redbrick/Gragg Cardona Partners
Parcel 16		
Parcel 17	Whitman-Walker Health + 1 additional office building	Redbrick/Gragg Cardona Partners
Parcel 18	WMATA Metro	

\*Under Construction





UCC

Pine St

Magnolia St

Water Tower

New Saint Elizabeths Hospital

Alabama Ave. SE

0 100' 200' 400'