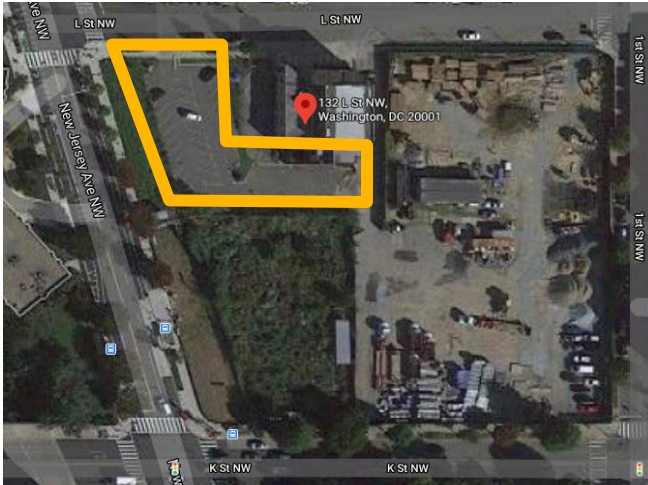


L St NW & New Jersey Ave NW



- **AGENCY:** DMPED
- **ADDRESS:** New Jersey Ave NW
- **WARD:** 6
- **SIZE:** 14,936 sf
- **ZONING:** MU-4
- **NEIGHBORHOOD:** Northwest One
- **RFP RELEASE:** Summer 2021

New Jersey Ave NW is a District – owned surface parking lot, totaling 14,936 square feet, that lies just northeast of the intersection of New Jersey Avenue NW and K Street NW. The site is zoned MU-4 and is to be redeveloped in partnership with the adjacent church, Southern Baptist Church. The project is part of the DMPED Faith-Based Initiative.

The site is located within the Northwest One neighborhood, clustered between Mount Vernon Triangle and NoMA, two rapidly growing neighborhoods. It is in proximity to three Metrorail stations, consisting of the Green, Yellow, and Red lines, and multiple Metrobus stops along New Jersey Ave NW and North Capitol St NW. It is minutes away from the Interstate 395. There are currently numerous popular dining establishments within both the Mt. Vernon Triangle and the NoMA neighborhoods, including Busboys and Poets on K St NW. Walmart Supercenter, Safeway and Harris Teeter are also within a mile from the site.

Questions? Contact Sarina Accime at sarina.accime@dc.gov or 202-340-6318