



# CHEVY CHASE LIBRARY DESIGN & LIFE CYCLE PERFORMANCE REQUIREMENTS



JASPREET PAHWA  
DIRECTOR,  
CAPITAL PLANNING & CONSTRUCTION  
DC PUBLIC LIBRARY



# CHEVY CHASE LIBRARY BUILT ENVIRONMENT

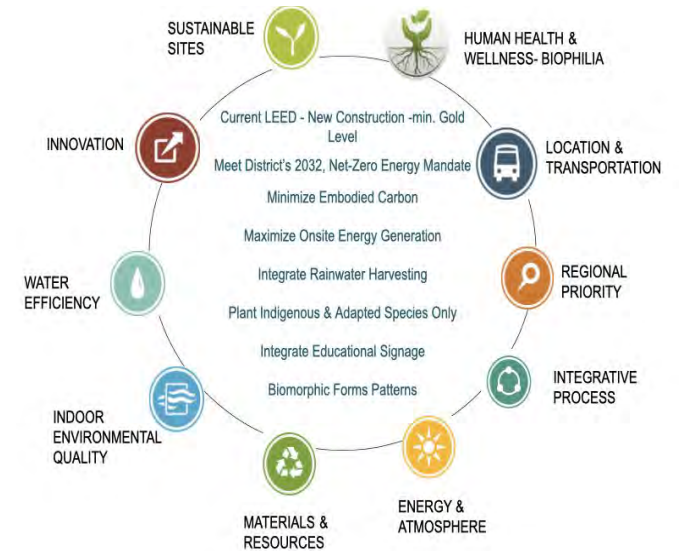
## DESIGN & LIFE CYCLE PERFORMANCE REQUIREMENTS

**QUANTITATIVELY** 23,000 GSF for core and bespoke library program spaces, designed and built for at least a 50 year life cycle.

### QUALITATIVELY

Reference exhibits for most recently delivered DC Public libraries namely, Southwest Library & Lamond-Riggs Library, provided to illustrate two distinct, **CONTEXT SENSITIVE** approaches to:

1. Connection at street level, optimizing solar orientation, transparency of building envelope, **MAXIMIZING** visual and physical **CONNECTION TO OUTDOORS** for informal and formal gatherings with **Universal ACCESSIBILITY, SAFETY,** integration of **BIOPHILIA,** glare free **NATURAL LIGHT** - especially from north face.
2. **BUILDING W/ PRECISION,** integrating **ENVIRONMENTALLY, & ECOLOGICALLY CONSCIOUS,** innovative, and timeless exterior and interior materials for **RESILIENCE** and **High Performance** over the building's Lifecycle.
3. Logical and intuitive adjacencies, of **core & bespoke library services** prioritized by each community *in the design phase, creating* vibrant, compelling, program spaces designed to be physically & technologically **ADAPTABLE** with evolving needs of the community.



### REFERENCE EXHIBITS

#### SOUTHWEST LIBRARY & LAMOND-RIGGS LIBRARY

PROGRAM SUMMARY

SITE PLAN

FLOOR PLANS

ELEVATION STUDIES

EXTERIOR IMAGES

INTERIOR PHOTOS

LEED SCORECARD

# CHEVY CHASE LIBRARY BUILT ENVIRONMENT

## EXHIBIT: PROGRAM SUMMARY SOUTHWEST LIBRARY & LAMOND-RIGGS LIBRARY

### SPACE PROGRAM SUMMARY: Southwest Library

OVERVIEW PROGRAM TOTALS	NSF	GSF (Gross Factor 1.20)
ENTRANCE	1,040	1,248
ADULT SERVICES	4,025	4,830
TEEN SERVICES	300	360
CHILDREN'S SERVICES	3,775	4,530
MEETING SPACES	3,165	3,798
STAFF SPACES	1,525	1,830
BUILDING SERVICES	1,955	2,346
<b>GRAND TOTAL</b>	<b>15,785</b>	<b>18,942</b>

**COMMUNITY BESPOKE SERVICE AT SOUTHWEST -  
MAKERSPACE STEAM LAB INTEGRATED INTO MEETING  
SPACES GSF**

### SPACE PROGRAM SUMMARY: Lamond-Riggs/Lillian J. Huff Library

OVERVIEW PROGRAM TOTALS	NSF	GSF (Gross Factor 1.20)
ENTRANCE	2,397	2,876
ADULT SERVICES	5,302	6,362
TEEN SERVICES	1,178	1,413
CHILDREN'S SERVICES	3,617	4,340
MEETING SPACES	4,140	4,968
STAFF SPACES	2,278	2,733
BUILDING SERVICES	750	900
<b>GRAND TOTAL</b>	<b>19,662</b>	<b>23,594</b>

**COMMUNITY BESPOKE SPACE - NEIGHBORHOOD LIVING ROOM  
AT LAMOND-RIGGS IS INTEGRATED INTO ADULT SERVICES**

**PROGRAMMATIC OVERLAPS WITH COMMUNITY CENTER THAT WILL BE CONSIDERED FOR SYNERGIES INCLUDE: STAFF SPACES,  
ENTRANCE VESTIBULE, RESTROOMS, BUILDING SYSTEMS SPACES.**

# CHEVY CHASE LIBRARY BUILT ENVIRONMENT

## EXHIBIT: SOUTHWEST LIBRARY, FIRST FLOOR PLAN

UNOBSTRUCTED VIEWS TO OUTDOORS

SEATING AT THE PERIMETER: INDOORS & OUTDOORS

Access to power for patron devices at Lounge furniture & tables w/ chairs along north perimeter w/ views of park with old growth

**6** OUTDOOR SPACE  
accessible only from within the library.

### **1** PROMINENT MAIN PUBLIC ENTRANCE

Unversally accessible, at street level, well lit. 8'-0" wide opening w/ bi-parting automatic sliding doors & 10'-0" deep vestibule with recessed walk off mat.

### EXTERIOR BOOK DROP

At street level w/ after-hours access on path to main entrance. Backs into a staff-only space for retrieving materials- 2 hour fire-rating.

### **2** WELCOME AREA

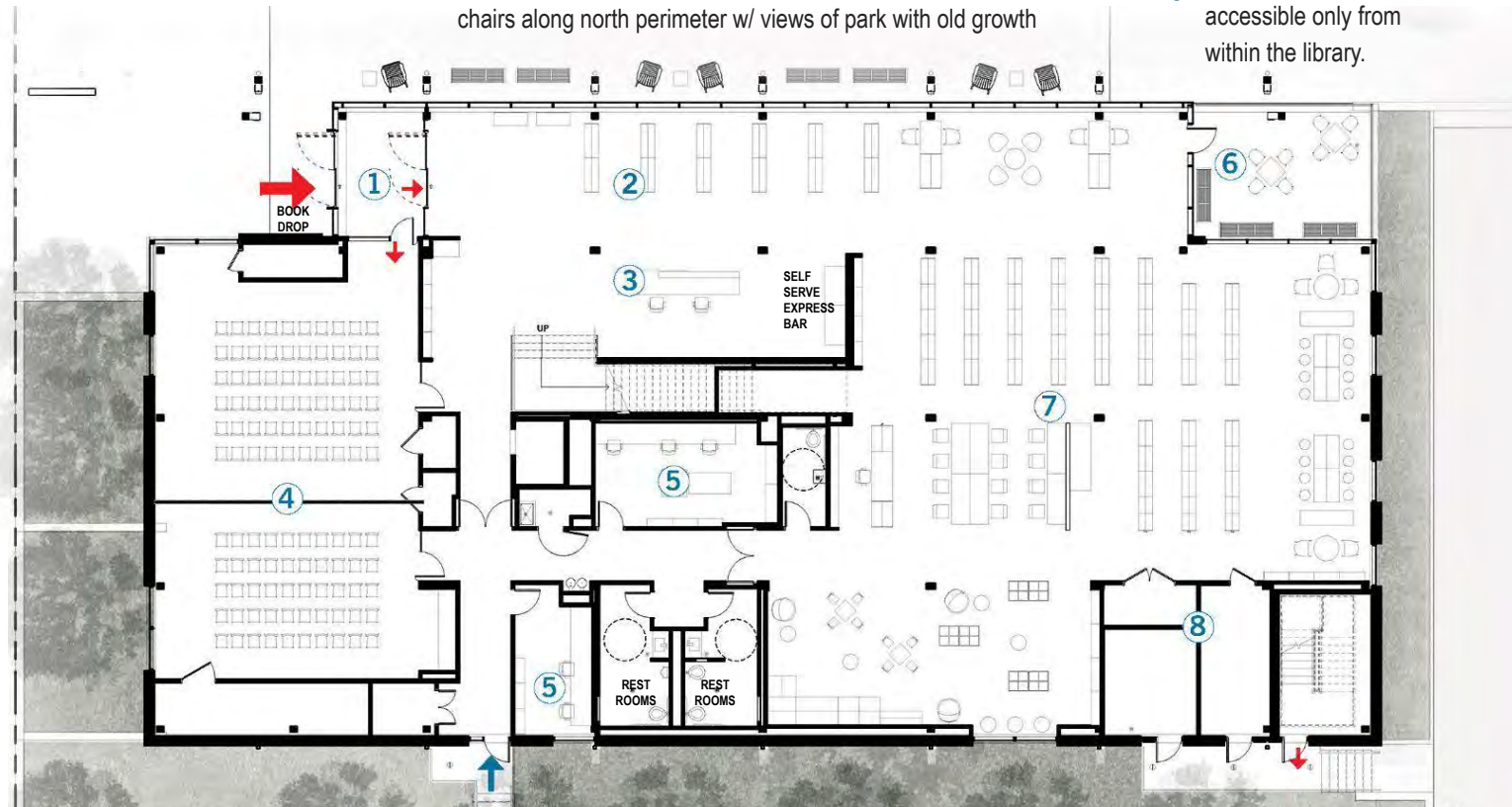
Completely in line of sight of staff  
'Wow wall' (visual feature) in the gathering zone for small groups of upto 10  
Space for 'Holds' on shelves w/ castors designed for flexibility  
Self-Checkout area

### **3** FRONT DESK

2 person staff station with PC's and peripherals  
Designed to serve differently-abled patrons and allow book/ material check-out /return depressible bin, with duress alarm tied to MPD.

### SELF-SERVE EXPRESS BAR

Within line of sight of staff  
Unversally accessible counter with 3 to 4 stations: *catalog pc, express computer, and print release station*



### **5** CHILDREN'S STAFF WORKROOM

### **4** MULTIPURPOSE ROOM

Within line of sight of staff  
100 people space with high performing acoustics, & AV capabilities to enable independent simultaneous programs when operable partition is drawn.  
Stackable Chair storage  
Solid surface counter w/ sink to enable catered events and wash area for children's activities  
Direct access from Children's space to Multipurpose room for story time

### UNIVERSALLY ACCESSIBLE LIBRARY STAFF ENTRANCE

Distinct & out of sight from public entrance

### ACCESSIBLE RESTROOMS

w/ Power assist door operators and water fountain, with water filling station.

### **8** MEP/BUILDING SYSTEMS

spaces w/ direct access for maintenance and servicing from exterior

### **7** CHILDREN'S SPACE

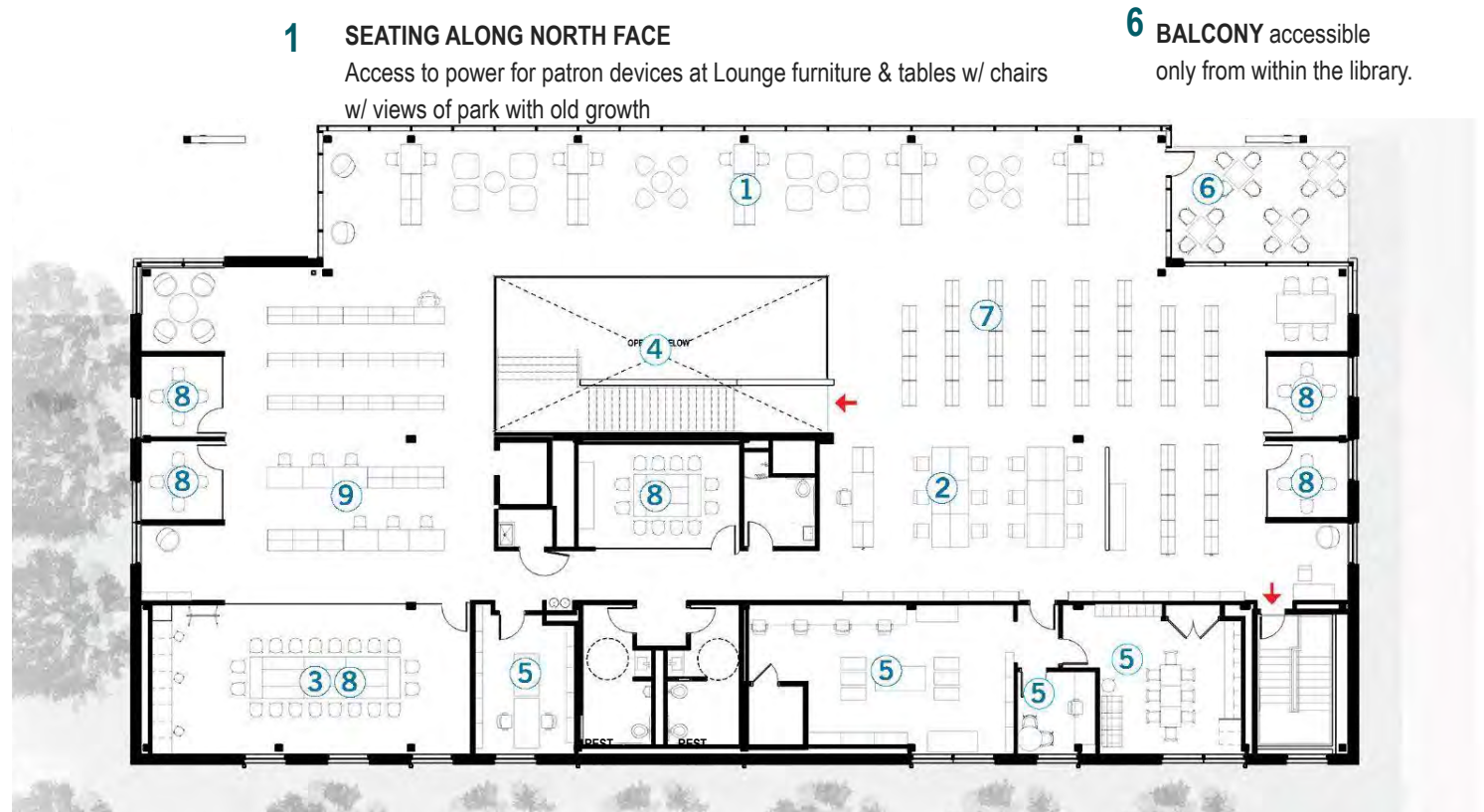
Tucked away from the street  
Children's staff desk designed for 2 staff has line of sight to entire space  
Stroller parking for 10 strollers closest to story time space and access to Family restroom  
Zoned for different age groups babies, toddlers, preschoolers, school aged children with variety of furnishings  
Picture books/ board books custom browser bins, custom tactile/interactive wall surfaces for experiential learning, Computers and homework area.

**SEE EXHIBIT INTERIOR DESIGN, SOUTHWEST LIBRARY FOR PHOTOS**

# CHEVY CHASE LIBRARY BUILT ENVIRONMENT

## EXHIBIT: SOUTHWEST LIBRARY, SECOND FLOOR PLAN

- 8 RESERVABLE STUDY ROOMS**  
 Securable  
 Visible to staff  
 Designed for collaboration with 4 to 6 people  
 Acoustically high-performing  
 Outfitted with AV technology and White Boards  
 Views to outdoors & natural light
- 8 IMPROMPTU COLLABORATION NOOKS**  
 Movable lounge furniture or tables and chairs  
 White Boards
- 9 TEEN COLLECTION, AND COMPUTER ZONE**  
 w/ integrated Teen staff touchpoint  
 Outfitted with AV technology and White Boards  
 Views to outdoors & natural light
- 3 MULTIPURPOSE ROOM**  
**TRAINING/MAKERSPACE: BESPOKE SPACE**  
 Acoustically high performing  
 Outfitted with counters for trending technologies  
 AV display also supports gaming  
 Views to outdoors & natural light

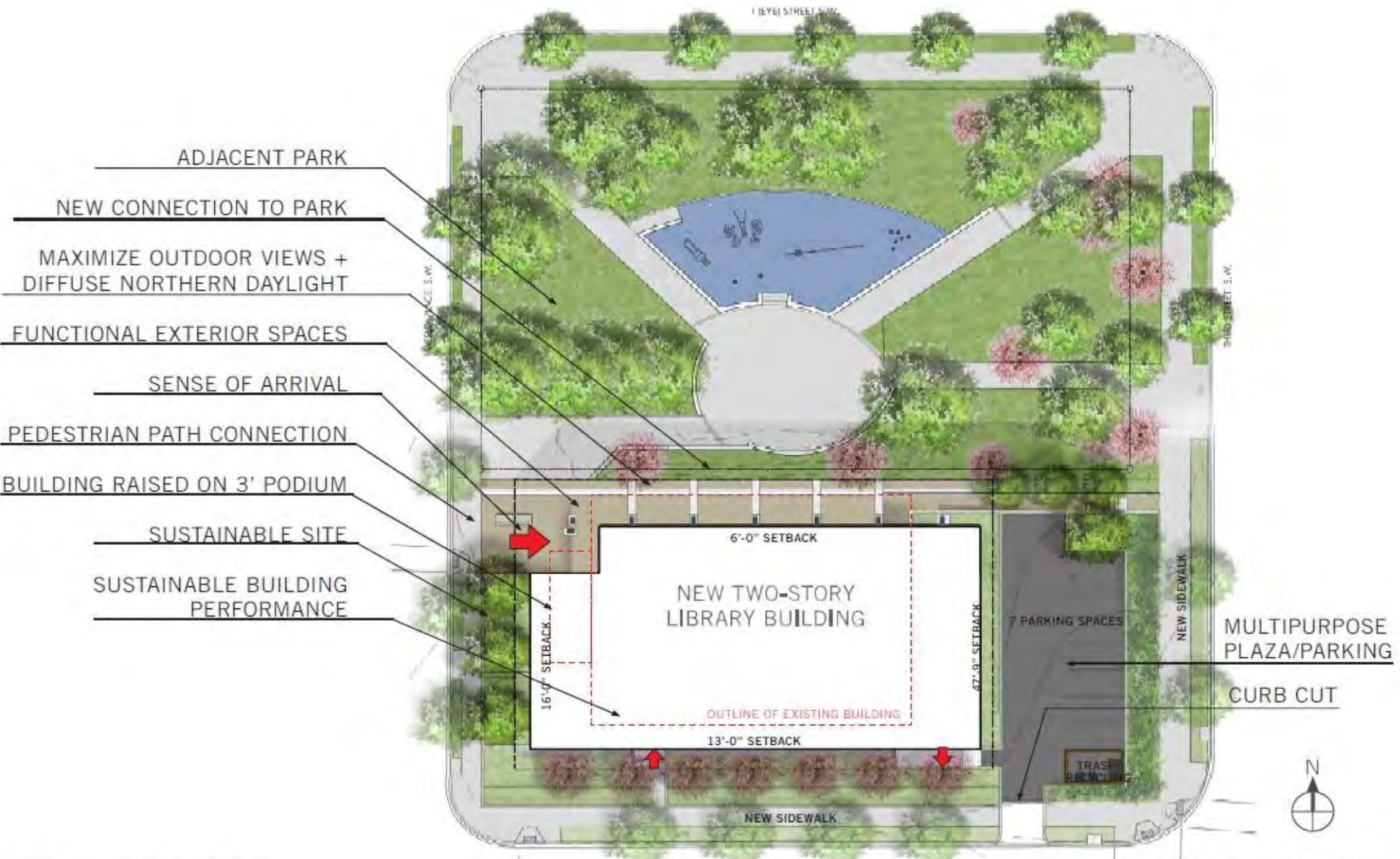


- 1 SEATING ALONG NORTH FACE**  
 Access to power for patron devices at Lounge furniture & tables w/ chairs  
 w/ views of park with old growth
- 6 BALCONY** accessible only from within the library.
- 7 ADULT COLLECTION**  
 Standard 60 inch high shelving with 4 feet aisles and lighting targeted at book spines
- 2 ADULT COMPUTER ZONE**
- 2 ADULT STAFF DESK**  
 2 person staff station with pc's and peripherals  
 Designed to serve differently-abled adult patrons
- ACCESSIBLE RESTROOMS**  
 w/ Power assist door operators and water fountain, with water filling station.
- 5 LIBRARY STAFF SPACES**  
 All spaces have Views to outdoors & natural light  
 Acoustically isolated forms taff space  
 Adult services staff workroom,  
 Manager's Office  
 Breakroom  
 Digital surveillance access and alarm within staff spaces
- LIBRARY STAFF RESTROOM w/ SHOWER**

SEE EXHIBIT INTERIOR DESIGN, SOUTHWEST LIBRARY FOR PHOTOS

# CHEVY CHASE LIBRARY BUILT ENVIRONMENT

## EXHIBIT: SITE PLAN SOUTHWEST LIBRARY



# CHEVY CHASE LIBRARY BUILT ENVIRONMENT

## EXHIBIT: SOUTHWEST LIBRARY EXTERIOR



The award winning LEED Platinum mass timber structure, of Southwest Library celebrates the vernacular of its neighborhood while innovatively reinterpreting the folded plate into Dowel laminated timber roof.

# CHEVY CHASE LIBRARY BUILT ENVIRONMENT

## EXHIBIT: INTERIOR DESIGN SOUTHWEST LIBRARY



### WELCOME AREA

Designed as flexible space for gatherings,  
Holds pick-up

### FRONT DESK

2 person staff station crafted in solid surface  
millwork

### WOW WALL

Historic image circa 1858 of the Waterfront Area  
Sourced from DC LIBRARY SPECIAL ARCHIVES  
Printed on Acoustic metal panel system

**Self Serve at Express Stations**



# CHEVY CHASE LIBRARY BUILT ENVIRONMENT

## EXHIBIT: INTERIORS SOUTHWEST LIBRARY



### ADULT COLLECTION

Natural & Artificial Lighting in rhythm w/ stacks



### ADULT SEATING AREA

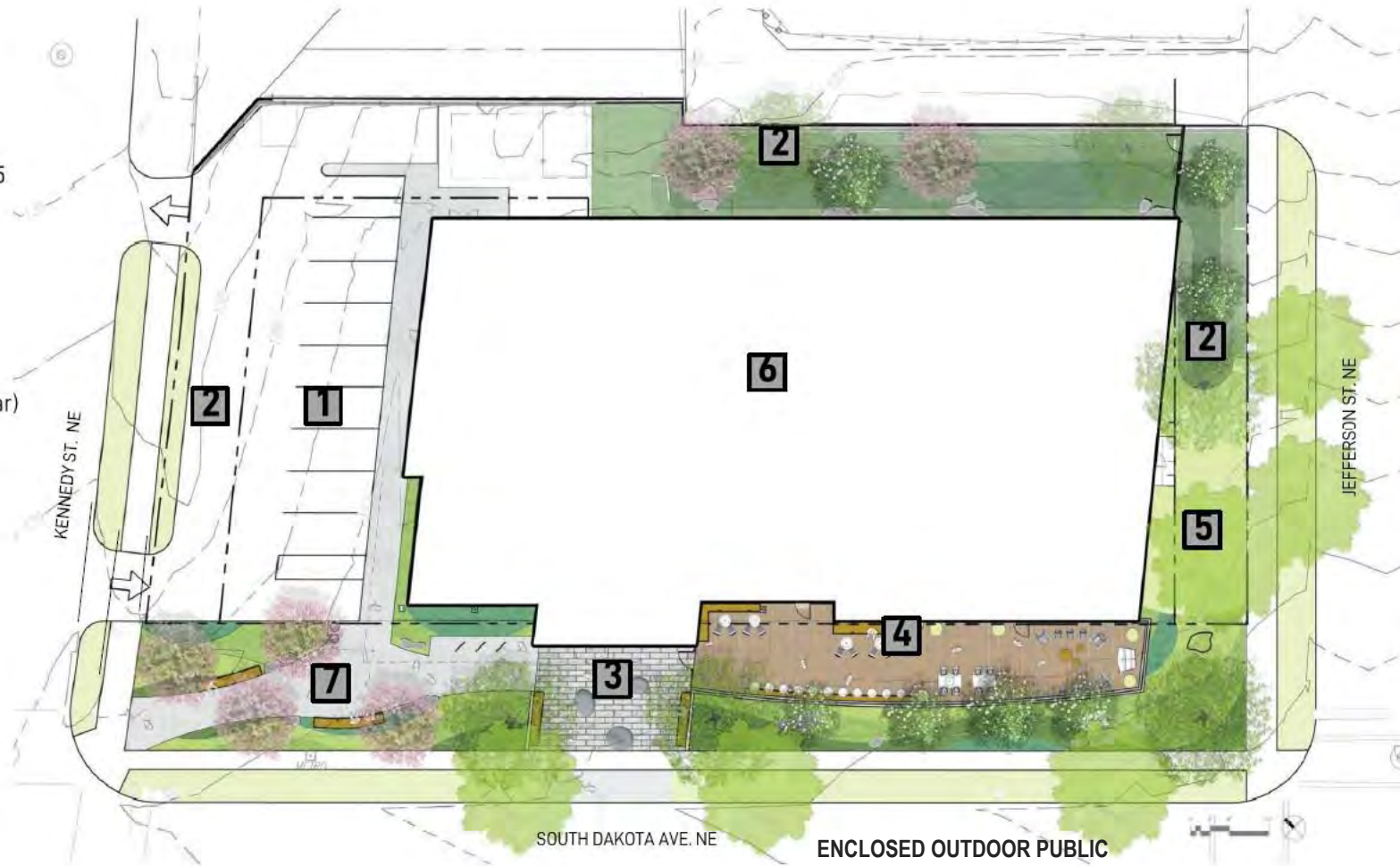


### MEETING SPACE

# CHEVY CHASE LIBRARY BUILT ENVIRONMENT

## EXHIBIT: SITE PLAN LAMOND-RIGGS LIBRARY

- 1 Parking
- 2 Required Setback (Side Yard: 15 feet; Rear Yard: 20 feet)
- 3 New Entry
- 4 Front Porch
- 5 Preserved Heritage Tree  
*Pyrus calleryana* (Bradford Pear)
- 6 High Solar Reflectance Roof
- 7 Entry Plaza



ENCLOSED OUTDOOR PUBLIC  
ACCESSIBLE ONLY FROM WITHIN  
THE LIBRARY

# CHEVY CHASE LIBRARY BUILT ENVIRONMENT

## EXHIBIT: LAMOND-RIGGS LIBRARY, FIRST FLOOR PLAN

- 7 MEP/BUILDING SYSTEMS spaces w/ access from staff entrance**

**UNIVERSALLY ACCESSIBLE LIBRARY STAFF ENTRANCE**  
distinct and out of sight from public entrance from

- 8 WELCOME AREA**  
Completely in line of sight of staff  
'Heritage wall' (visual feature) in the gathering zone for small groups of upto 10  
Space for 'Holds' on shelves w/ castors designed for flexibility  
Self-Checkout area

- 3 FRONT DESK**  
2 person staff station with PC's and peripherals  
Designed to serve differently-abled patrons and allow book/ material check-out /return depressible bin, with duress alarm tied to MPD.

### SELF-SERVE EXPRESS BAR

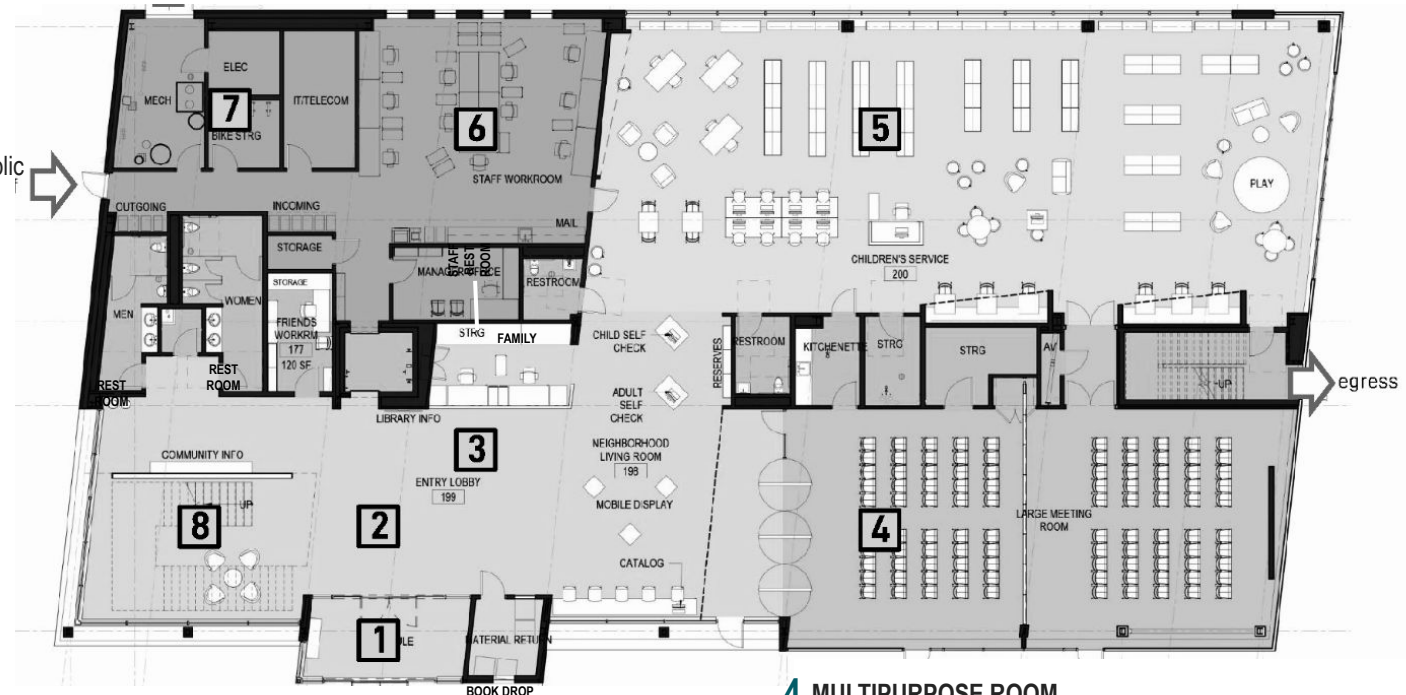
Within line of sight of staff  
Unlversally accessible counter with 3 to 4 stations: *catalog pc, express computer, and print release station*

- 6 LIBRARY STAFF SPACES**  
Proximate to staff entrance and book delivery  
Workstation for 14 staff  
Views to outdoors & natural light  
Manager's Office  
Digital surveillance access and alarm within staff spaces

- 5 CHILDREN'S SPACE**  
Tucked away from the main entrance with unobstructed views to the north  
Children's staff desk designed for 2 staff w/ line of sight to entire space  
Stroller parking for 10 strollers closest to story time space and access to Family restroom  
Zoned for different age groups babies, toddlers, preschoolers, school aged children with variety of furnishings  
Picture books/ board books custom browser bins, custom tactile/interactive wall surfaces for experiential learning, Computers and homework area.  
Biophilic motifs and textures integrated within interior spaces and surfaces.

- 1 PROMINENT MAIN PUBLIC ENTRANCE**  
Unlversally accessible at street level, well l 8'-0" wide opening w/ bi-parting automatic sliding doors & 10'-0" deep vestibule with recessed walk off mat.  
In line of sight of staff.
- EXTERIOR BOOK DROP**  
At street level w/ after-hours access on path to main entrance.  
Backs into a staff-only space for retrieving materials- 2 hour fire-rating.

- 4 MULTIPURPOSE ROOM**  
Within line of sight of staff  
100 people space with high performing acoustics, & AV capabilities to enable independent simultaneous programs when operable partition is drawn.  
Stackable Chair storage  
Connected to catering space w/ sink to enable catered events and wash area for children's activities  
Direct access from Children's space to Multipurpose room for story time



# CHEVY CHASE LIBRARY BUILT ENVIRONMENT

## EXHIBIT: LAMOND-RIGGS LIBRARY, SECOND FLOOR PLAN

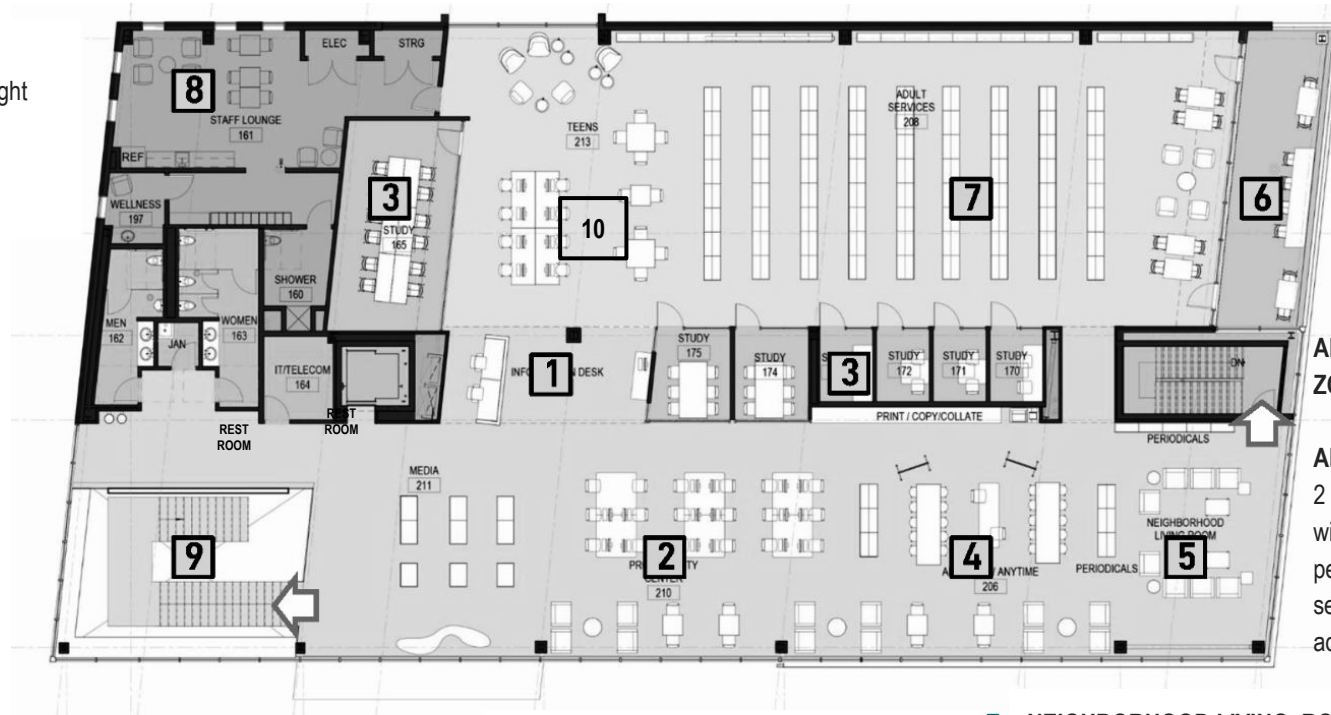
- 8 LIBRARY STAFF SPACES**  
 All spaces have Views to outdoors & natural light  
 Acoustically isolated forms staff space  
 Breakroom  
 Separate Wellness/ Lactation room

LIBRARY STAFF RESTROOM w/ SHOWER

- 10 TEEN COLLECTION, AND COMPUTER ZONE**  
 w/ integrated Teen staff touchpoint  
 Outfitted with AV technology and White Boards  
 Views to outdoors & natural light

- 3 RESERVABLE STUDY ROOMS**  
 Securable  
 Visible to staff  
 Designed for collaboration with 4 to 6 people  
 Acoustically high-performing  
 Outfitted with AV technology and White Boards  
 Indirect views to natural light

- 6 BALCONY** accessible only from within the library.



- 7 ADULT COLLECTION**  
 Standard 60 inch high shelving with 4 feet aisles and lighting targeted at book spines.

ADULT COMPUTER ZONE

ADULT STAFF DESK  
 2 person staff station with pc's and peripherals Designed to serve differently-abled adult patrons.

- 4 ANYTHING/ANYTIME SPACE**  
**BESPOKE SPACE**  
 Flexible adaptable space with a counter for equipment for self directed or staff led programming.  
 In Proximity to Adults collection and computing spaces

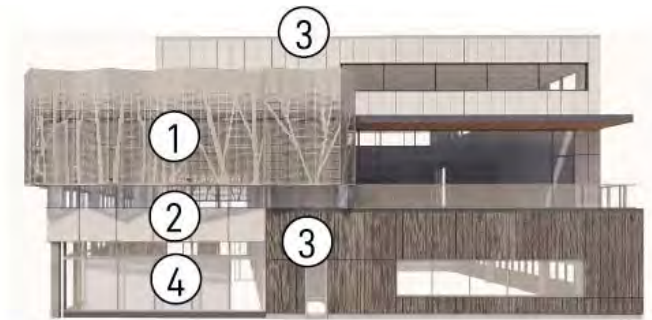
- 5 NEIGHBORHOOD LIVING ROOM**  
**BESPOKE SPACE**  
 Lounge Area for gatherings  
 Chess & other Board games  
 Poetry slams  
 In Proximity to Adults collection and computing spaces

# CHEVY CHASE LIBRARY BUILT ENVIRONMENT

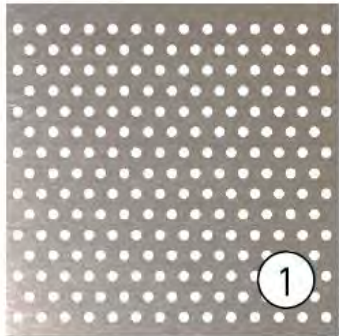
## EXHIBIT: ELEVATION STUDIES LAMOND-RIGGS LIBRARY



Building Elevation South Dakota Avenue NE



Building Elevation Jefferson Street NE



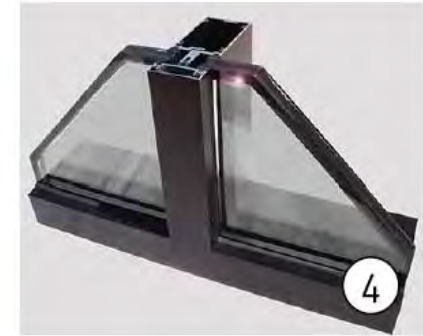
Perforated aluminum panel with metallic powder coating finish



Curtain wall system with low-E vision glass and spandrel



High Pressure Compact Laminate Trespa Meteon (Brooklyn Classic + Greyed Cedar)



Storefront system

The LEED v4 Gold Lamond-Riggs Library, creates civic presence while skilfully integrating biophilic motifs to filter views from inside to the outdoors with perforated metal screening on curtain wall

# CHEVY CHASE LIBRARY BUILT ENVIRONMENT

## EXHIBIT: INTERIORS LAMOND-RIGGS LIBRARY



HERITAGE WALL & WELCOME ZONE



NEIGHBORHOOD LIVING ROOM

# CHEVY CHASE LIBRARY BUILT ENVIRONMENT

## EXHIBIT: INTERIOR DESIGN LAMOND-RIGGS LIBRARY



CHILDREN'S ZONE

# CHEVY CHASE LIBRARY BUILT ENVIRONMENT

## EXHIBIT: LEED SCORECARD SOUTHWEST LIBRARY & LAMOND-RIGGS LIBRARY

### Southwest Library

Project ID 1000078101  
 Rating system & version LEED-NC  
 Project registration date 09/22/2016



Platinum Certified

Certified: 40-49, Silver: 50-59, Gold: 60-79, Platinum: 80+

### LEED 2009 New Construction

Attempted: 77, Denied: 0, Pending: 0, Awarded: 81 of 110 points

<b>SUSTAINABLE SITES</b>	<b>23 OF 26</b>
SSp1 Construction Activity Pollution Prevention	Y
SSc1 Site Selection	1/1
SSc2 Development Density and Community Connectivity	5/5
SSc3 Brownfield Redevelopment	1/1
SSc4.1 Alternative Transportation-Public Transportation Access	6/6
SSc4.2 Alternative Transportation-Bicycle Storage and Changing Rooms	1/1
SSc4.3 Alternative Transportation-Low-Emitting and Fuel-Efficient Vehicles	3/3
SSc4.4 Alternative Transportation-Parking Capacity	2/2
SSc5.1 Site Development-Protect or Restore Habitat	0/1
SSc5.2 Site Development-Maximize Open Space	1/1
SSc6.1 Stormwater Design-Quantity Control	0/1
SSc6.2 Stormwater Design-Quality Control	0/1
SSc7.1 Heat Island Effect, Non-Roof	1/1
SSc7.2 Heat Island Effect-Roof	1/1
SSc8 Light Pollution Reduction	1/1
<b>WATER EFFICIENCY</b>	<b>7 OF 10</b>
WEp1 Water Use Reduction-20% Reduction	Y
WE1 Water Efficient Landscaping	4/4
WE2 Innovative Wastewater Technologies	0/2
WE3 Water Use Reduction	3/4
<b>ENERGY AND ATMOSPHERE</b>	<b>29 OF 35</b>
EAp1 Fundamental Commissioning of the Building Energy Systems	Y
EAp2 Minimum Energy Performance	Y
EAp3 Fundamental Refrigerant Mgmt	Y
EAc1 Optimize Energy Performance	19/19
EAc2 On-Site Renewable Energy	7/7
EAc3 Enhanced Commissioning	0/2
EAc4 Enhanced Refrigerant Mgmt	2/2
EAc5 Measurement and Verification	1/3
EAc6 Green Power	0/2

<b>MATERIALS AND RESOURCES</b>	<b>5 OF 14</b>
MRp1 Storage and Collection of Recyclables	Y
MRc1.1 Building Reuse-Maintain Existing Walls, Floors and Rbpf	0/3
MRc1.2 Building Reuse - Maintain 50% of Interior Non-Structural Elements	0/1
MRc2 Construction Waste Mgmt	2/2
MRc3 Materials Reuse	0/2
MRc4 Recycled Content	1/2
MRc5 Regional Materials	2/2
MRc6 Rapidly Renewable Materials	0/1
MRc7 Certified Wood	0/1
<b>INDOOR ENVIRONMENTAL QUALITY</b>	<b>9 OF 15</b>
IEQp1 Minimum IAQ Performance	Y
IEQp2 Environmental Tobacco Smoke (ETS) Control	Y
IEQc1 Outdoor Air Delivery Monitoring	1/1
IEQc2 Increased Ventilation	0/1
IEQc3.1 Construction IAQ Mgmt-Plan-During Construction	1/1
IEQc3.2 Construction IAQ Mgmt-Plan-Before Occupancy	0/1
IEQc4.1 Low-Emitting Materials-Adhesives and Sealants	1/1
IEQc4.2 Low-Emitting Materials-Paints and Coatings	1/1
IEQc4.3 Low-Emitting Materials-Flooring Systems	1/1
IEQc4.4 Low-Emitting Materials-Composite Wood and Agrifiber Products	0/1
IEQc5 Indoor Chemical and Pollutant Source Control	0/1
IEQc6.1 Controllability of Systems-Lighting	0/1
IEQc6.2 Controllability of Systems-Thermal Comfort	0/1
IEQc7.1 Thermal Comfort-Design	1/1
IEQc7.2 Thermal Comfort-Verification	1/1
IEQc8.1 Daylight and Views-Daylight	1/1
IEQc8.2 Daylight and Views-Views	1/1

<b>INNOVATION IN DESIGN</b>	<b>6 OF 6</b>
IDc1.1 SSc5.2 - Open Space	1/1
IDc1.1 Innovation in Design	0/1
IDc1.2 SSc4.1 - Public Transportation Access	1/1
IDc1.2 Innovation in Design	0/1
IDc1.3 EAc2 - On-Site Renewable Energy	1/1
IDc1.3 Innovation in Design	0/1
IDc1.4 Low-Mercury Lamping	1/1
IDc1.4 Innovation in Design	0/1
IDc1.5 IPc99 - Design for Enhanced Resilience	1/1
IDc1.5 Innovation in Design	0/1
IDc2 LEED@ Accredited Professional	1/1

<b>REGIONAL PRIORITY CREDITS</b>	<b>2 OF 4</b>
RPc1 Optimize Energy Performance	1/1
RPc2 On-Site Renewable Energy	1/1

**TOTAL 81 OF 110**

### Lamond Riggs Library

#### LEED v4 BD+C: New Construction

Attempted: 63, Denied: 1, Pending: 0, Awarded: 62 of 110 points

Project ID: 1000113688  
 Status: Gold Certified  
 Certification level: Gold  
 Certification date: 02/27/2023

<b>INTEGRATIVE PROCESS</b>	<b>0 OF 1</b>
Integrative Process	0/1
<b>LOCATION AND TRANSPORTATION</b>	<b>12 OF 16</b>
LEED for Neighborhood Development Location	0/16
Sensitive Land Protection	1/1
High Priority Site	1/2
Surrounding Density and Diverse Uses	2/5
Access to Quality Transit	5/5
Bicycle Facilities	1/1
Reduced Parking Footprint	1/1
Green Vehicles	1/1
<b>SUSTAINABLE SITES</b>	<b>5 OF 10</b>
Construction Activity Pollution Prevention	Y
Site Assessment	1/1
Site Development - Protect or Restore Habitat	0/2
Open Space	1/1
Rainwater Mgmt	0/3
Heat Island Reduction	2/2
Light Pollution Reduction	1/1
<b>WATER EFFICIENCY</b>	<b>6 OF 11</b>
Outdoor Water Use Reduction	Y
Outdoor Water Use Reduction	2/2
Indoor Water Use Reduction	Y
Indoor Water Use Reduction	4/6
Building-Level Water Metering	Y
Cooling Tower Water Use	0/2
Water Metering	0/1
<b>ENERGY AND ATMOSPHERE</b>	<b>18 OF 33</b>
Fundamental Commissioning and Verification	Y
Minimum Energy Performance	Y
Optimize Energy Performance	15/18
Building-Level Energy Metering	Y
Fundamental Refrigerant Mgmt	Y
Enhanced Commissioning	3/6
Advanced Energy Metering	0/1
Demand Response	0/2
Renewable Energy Production	0/3
Enhanced Refrigerant Mgmt	0/1
Green Power and Carbon Offsets	0/2

<b>MATERIALS AND RESOURCES</b>	<b>6 OF 13</b>
Storage and Collection of Recyclables	Y
Construction and Demolition Waste Mgmt Planning	Y
Building Life-Cycle Impact Reduction	0/5
Product disclosure & optimization - Environmental Product Declarations	1/2
Product disclosure & optimization - Sourcing of Raw Materials	1/2
Product disclosure & optimization - Material Ingredients	2/2
Construction and Demolition Waste Mgmt	2/2

<b>INDOOR ENVIRONMENTAL QUALITY</b>	<b>5 OF 16</b>
Minimum IAQ Performance	Y
Environmental Tobacco Smoke Control	Y
Enhanced IAQ Strategies	1/2
Low-Emitting Materials	0/3
Construction IAQ Mgmt Plan	1/1
IAQ Assessment	0/2
Thermal Comfort	0/1
Interior Lighting	2/2
Daylight	0/3
Quality Views	1/1
Acoustic Performance	0/1

<b>INNOVATION</b>	<b>6 OF 6</b>
Innovation	5/5
LEED Accredited Professional	1/1

<b>REGIONAL PRIORITY CREDITS</b>	<b>4 OF 4</b>
Access to Quality Transit	1/1
Reduced Parking Footprint	1/1
Green Vehicles	1/1
Optimize Energy Performance	1/1

**TOTAL 62 OF 110**

40-49 Points	50-59 Points	60-79 Points	80+ Points
CERTIFIED	SILVER	GOLD	PLATINUM